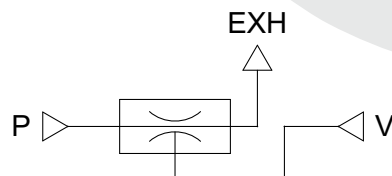




## Simbologia

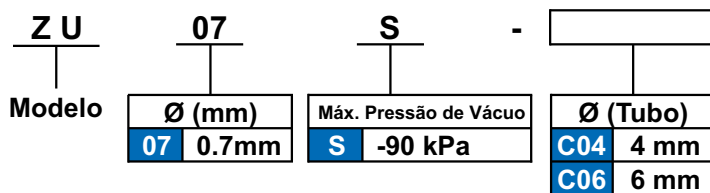


## Características Técnicas

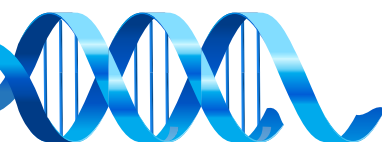
Temperatura de Trabalho	-5 to 50°C (Sem congelamento)
Fluído	Ar
Material Aplicável - Tubo	FEP, PFA, Nylon, Soft nylon, Poliuretano
Pressão de Trabalho	1 ~ 6 Bar
Pressão Padrão	4.5 Bar

Tipo	Modelo	Diâmetro do Bocal (mm)	Máx. Pressão de Vácuo (kPa)	Máxima Vazão (l/min(ANR))	Consumo de Ar (l/min(ANR))	Peso (g)
Alto Vácuo	ZU07S-C04	0.7	-84	7	14	6.5
	ZU07S-C06			10	29	7.0

## Codificação

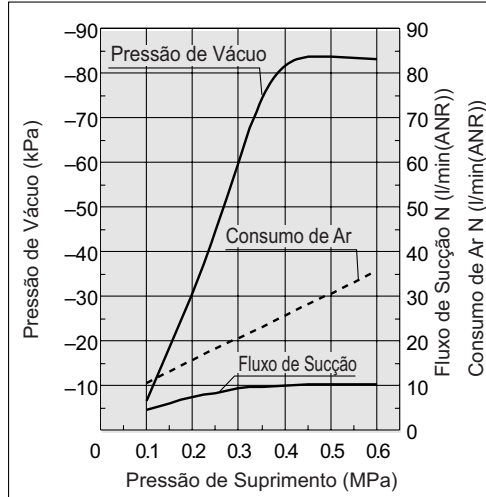


Exemplo: ZU07S-C04  
ZU07S-C06

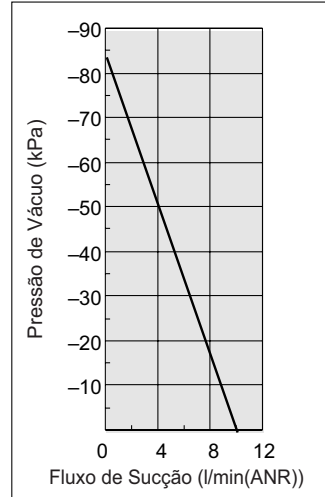


## Gráficos

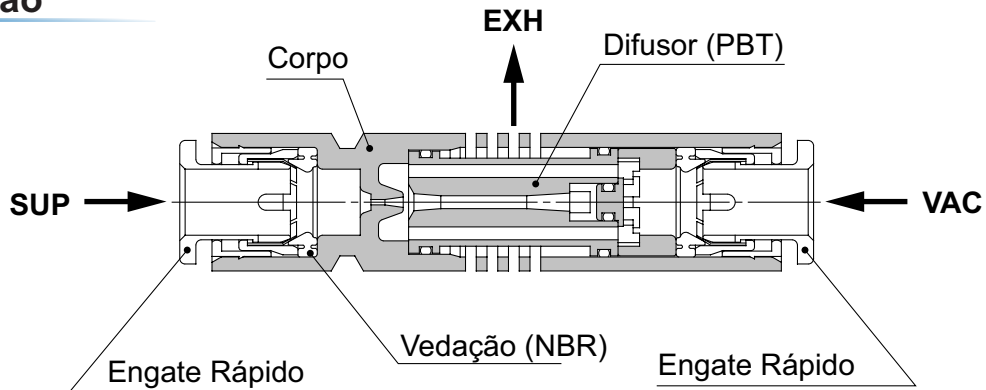
**Características de Escape**



**Características de Fluxo**



## Construção



## Dimensional

**ZU07S**

