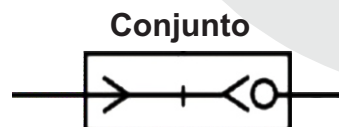


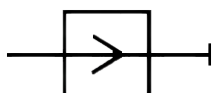
### Características Técnicas

|                           |                 |
|---------------------------|-----------------|
| Fluído                    | Ar              |
| Pressão de trabalho (Bar) | 0 ~ 10          |
| Temp. de trabalho (°C)    | 0 ~ 60          |
| Material do corpo         | Latão Niquelado |
| Vedação                   | NBR             |
| Rosca                     | BSP             |

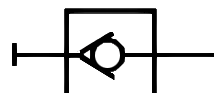
### Simbologia



#### Engate Macho



#### Engate Fêmea



#### Pino com Espigão



| Modelo   | Espigão |
|----------|---------|
| EGM-516E | 5/16"   |
| EGM-1/4E | 1/4"    |
| EGM-3/8E | 3/8"    |
| EGM-1/2E | 1/2"    |

#### Engate com Espigão



| Modelo   | Espigão |
|----------|---------|
| EGF-516E | 5/16"   |
| EGF-1/4E | 1/4"    |
| EGF-3/8E | 3/8"    |
| EGF-1/2E | 1/2"    |

#### Pino com Rosca Macho



| Modelo  | Rosca |
|---------|-------|
| EGM-01M | 1/8"  |
| EGM-02M | 1/4"  |
| EGM-03M | 3/8"  |
| EGM-04M | 1/2"  |

#### Engate com Rosca Macho



| Modelo  | Rosca |
|---------|-------|
| EGF-01M | 1/8"  |
| EGF-02M | 1/4"  |
| EGF-03M | 3/8"  |
| EGF-04M | 1/2"  |

#### Pino com Rosca Fêmea



| Modelo  | Rosca |
|---------|-------|
| EGM-02F | 1/4"  |
| EGM-03F | 3/8"  |
| EGM-04F | 1/2"  |

#### Engate com Rosca Fêmea



| Modelo  | Rosca |
|---------|-------|
| EGF-02F | 1/4"  |
| EGF-03F | 3/8"  |
| EGF-04F | 1/2"  |

