

Catálogo Técnico

Válvula Direcional Solenoide, ISO5599

Série VZ



Válvula Direcional Solenoide ISO 5599 - Série VZ

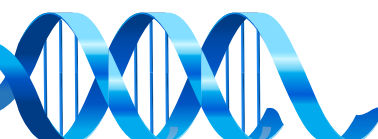
Vantagens

- Baixo Custo
- Construção compacta
- Montagem em manifold ISO5599
- Robustez
- Disponível em dois tamanhos ISO1 e 2



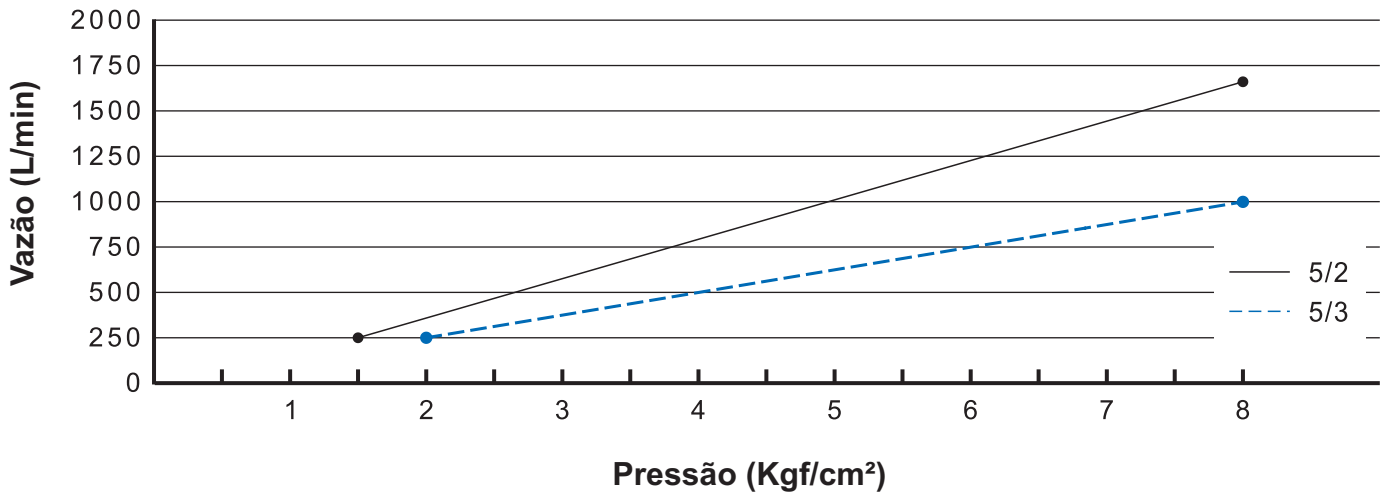
Características Técnicas

Modelo	VZ1	VZ2
Orifício (mm ²)	30	50
CV	1.7	2.8
Conexão	1/8"	1/4"
Fluído	Ar	
Temperatura	0° ~ 50°C	
Pressão de Trabalho	5/2 Simples: 1.5 ~ 10 5/2 Duplo: 1 ~ 10 5/3 Vias: 2 ~ 10 Bar	
Tempo de Resposta	23 ms	
Tolerância Voltagem	±10%	
Voltagem	12Vcc, 24Vcc, 110Vca, 220Vca	
Grau de Proteção	IP65	

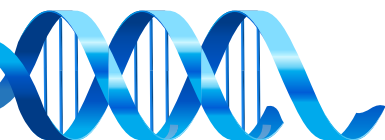
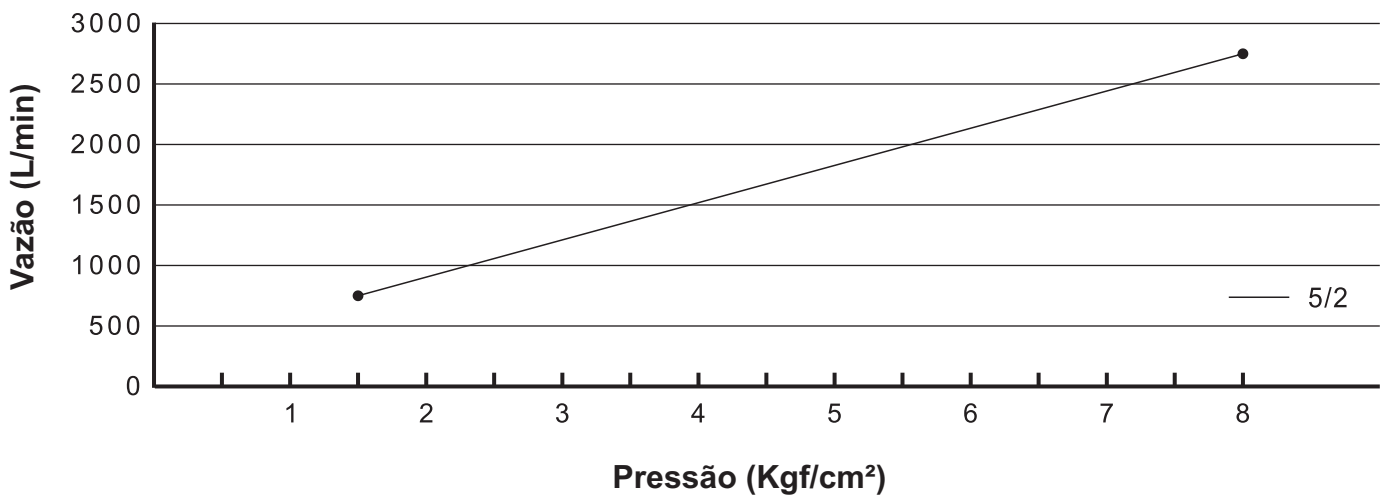


Gráficos de Vazão

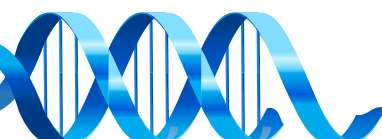
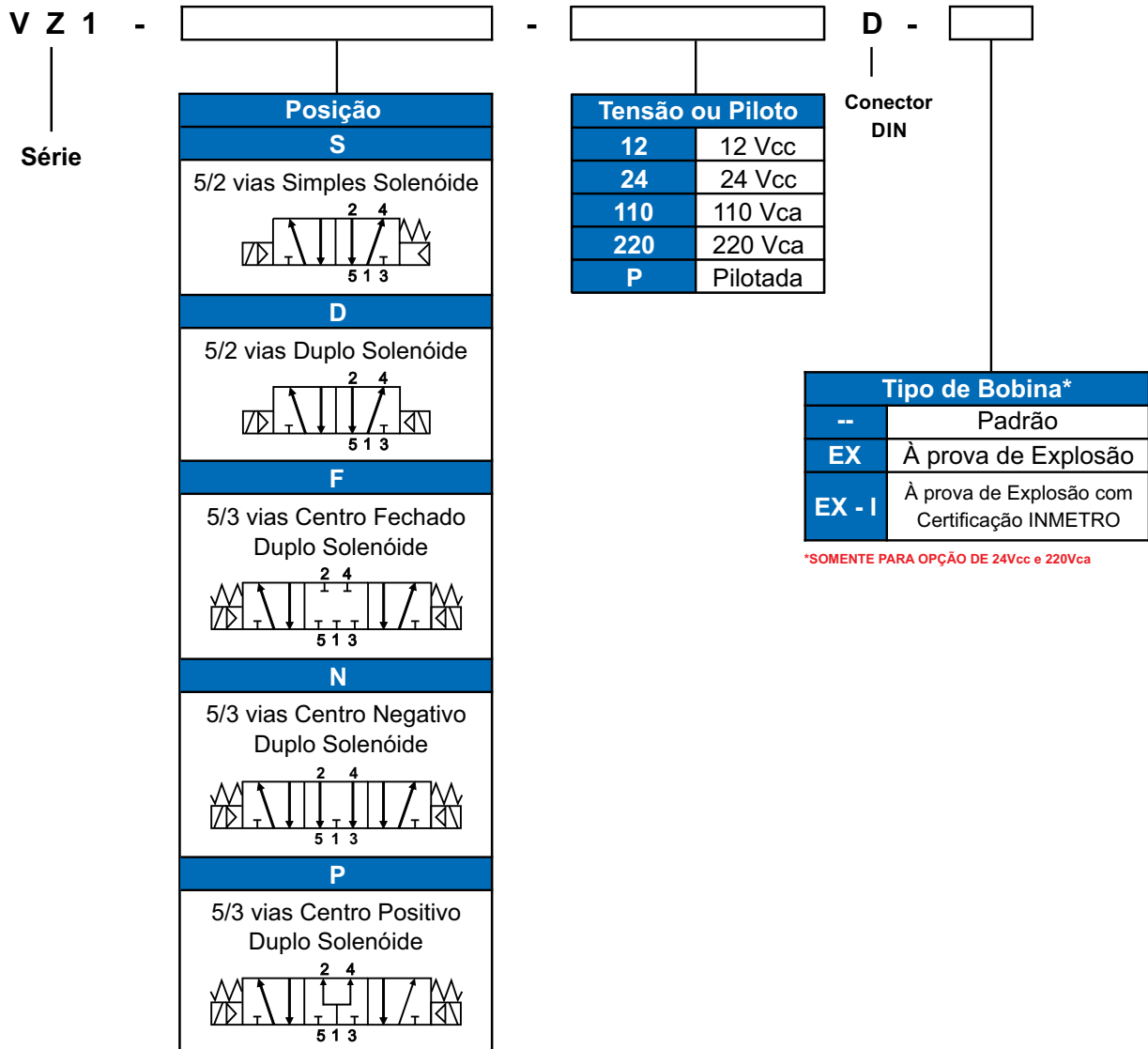
• VZ1 (ISO 1)



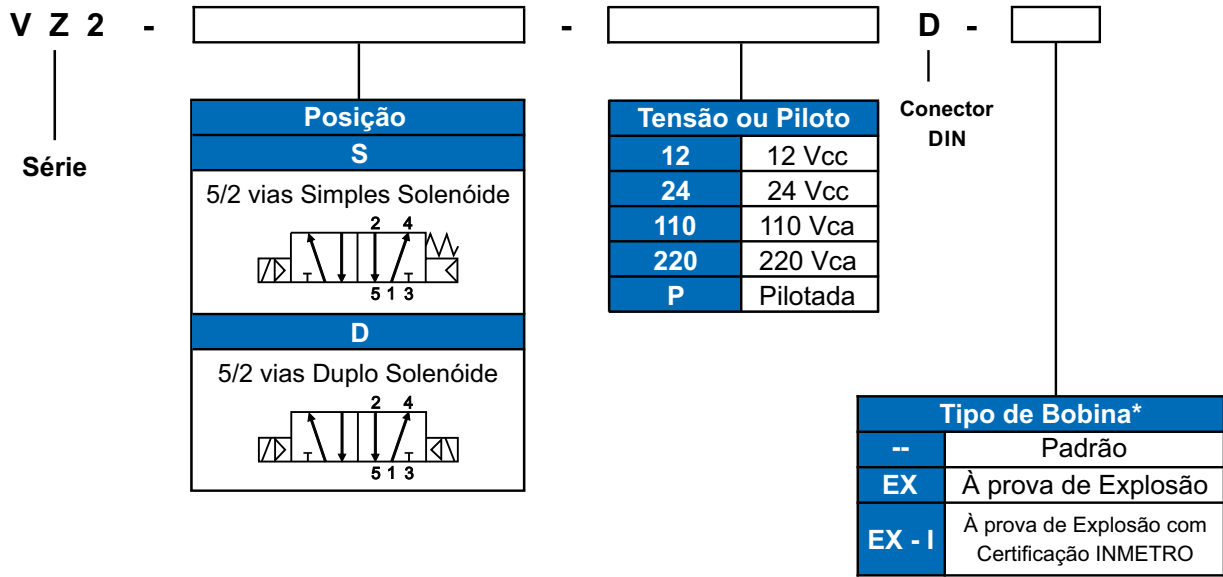
• VZ2 (ISO 2)



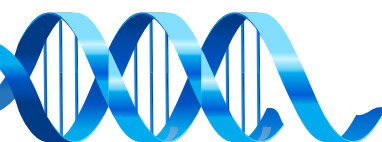
Codificação



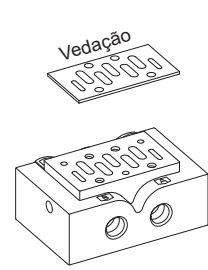
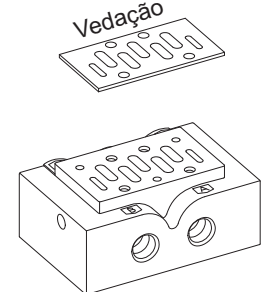
Codificação

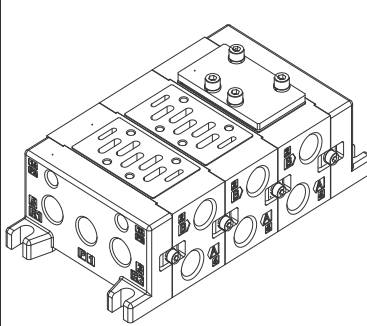
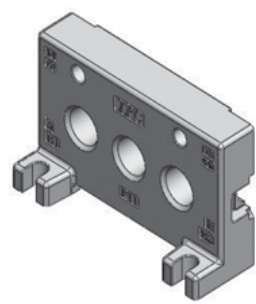
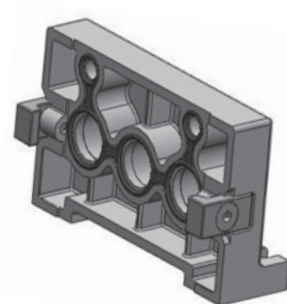
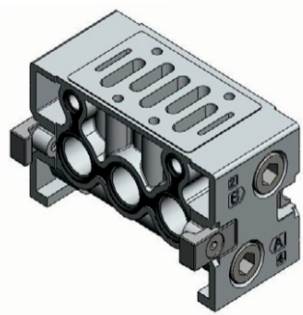


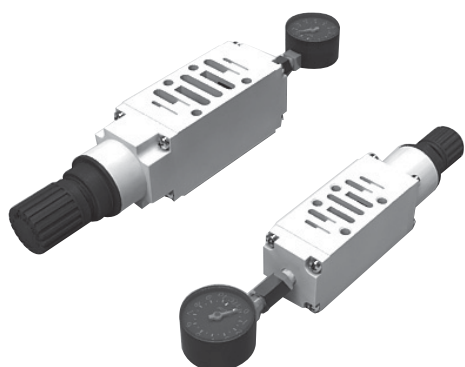
*SOMENTE PARA OPÇÃO DE 24Vcc e 220Vca



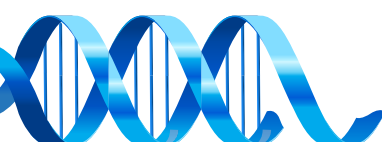
Válvula Direcional Solenoide ISO 5599 - Série VZ
Acessórios
• Bloco Manifold Individual

Base de Montagem - ISO1 VVB1-02	Base de Montagem - ISO2 VVB2-04
	

Placa de Fechamento VB1-PC	Tampa do Lado Esquerdo VVB1-L	Tampa do Lado Direito VVB1-R	Base para Montagem VVB1-B
	 <p><small>*Acompanha os grampos de montagem e vedação.</small></p>	 <p><small>*Acompanha os grampos de montagem e vedação.</small></p>	 <p><small>*Acompanha os grampos de montagem e vedação.</small></p>

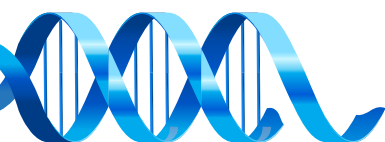
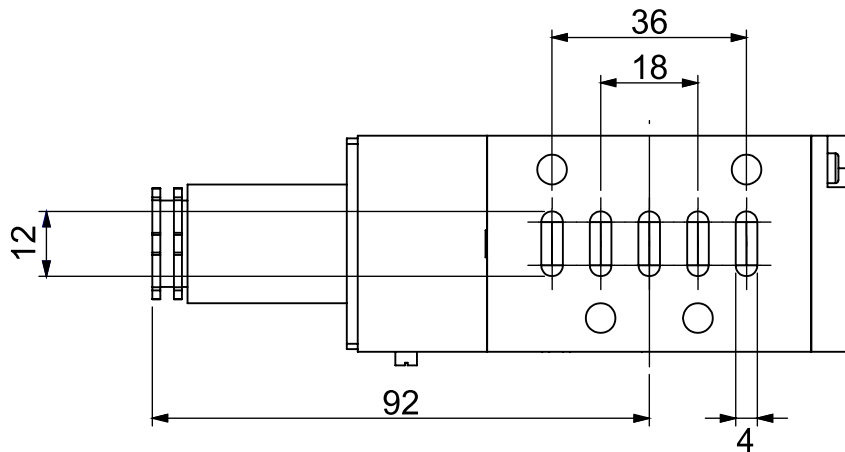
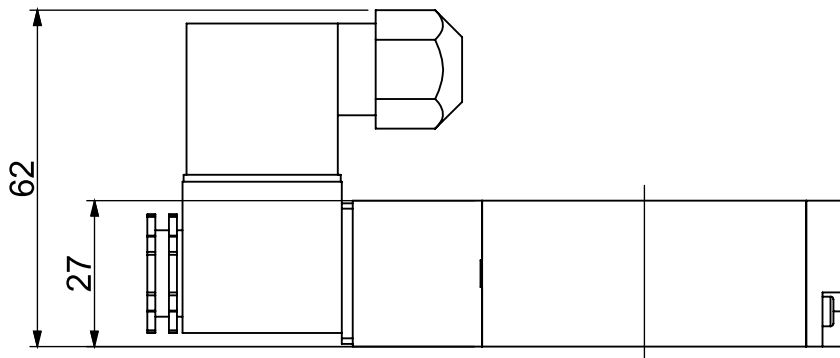
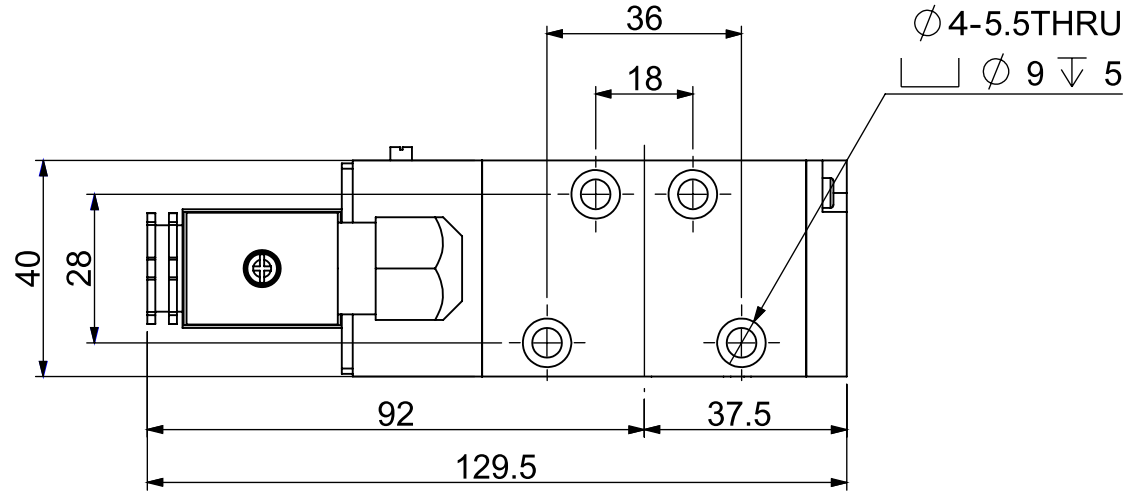
• Interface com Regulador de Pressão


Características Técnicas	
Código	VVB1-R / VVB2-R
Fluído	Ar Comprimido
Pressão de Trabalho(Bar)	1.5 ~ 10
Pressão de Teste (Bar)	15
Saída para Manômetro	Rc(PT)1/8"
Com Alívio	Sim
Lubrificação	Não requer (ISO VG32)



Dimensional - ISO 1

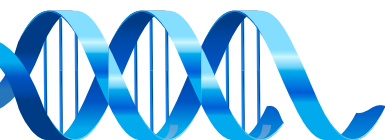
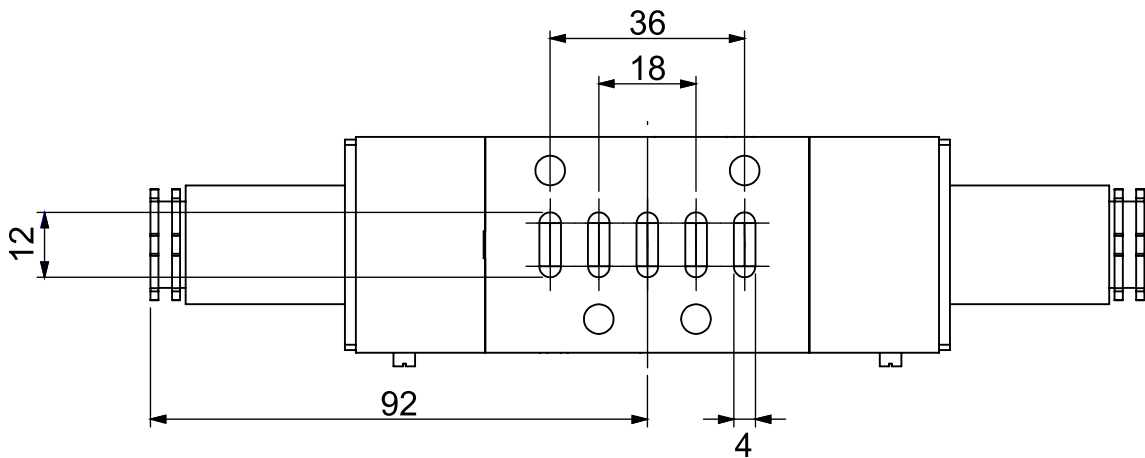
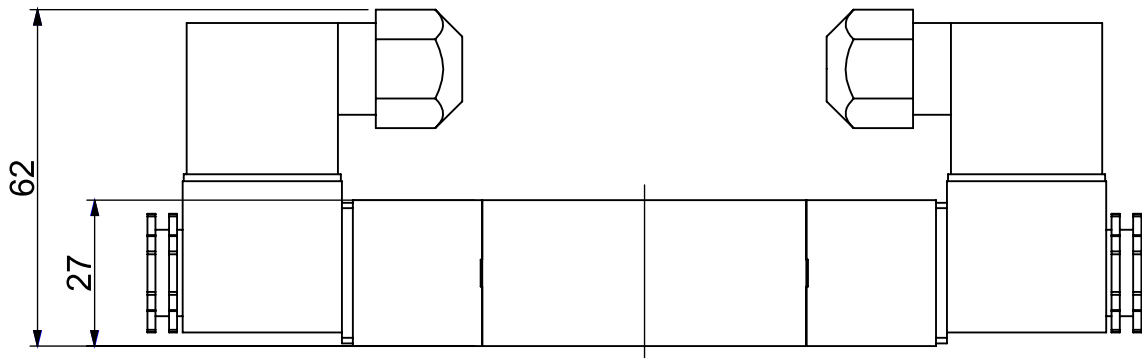
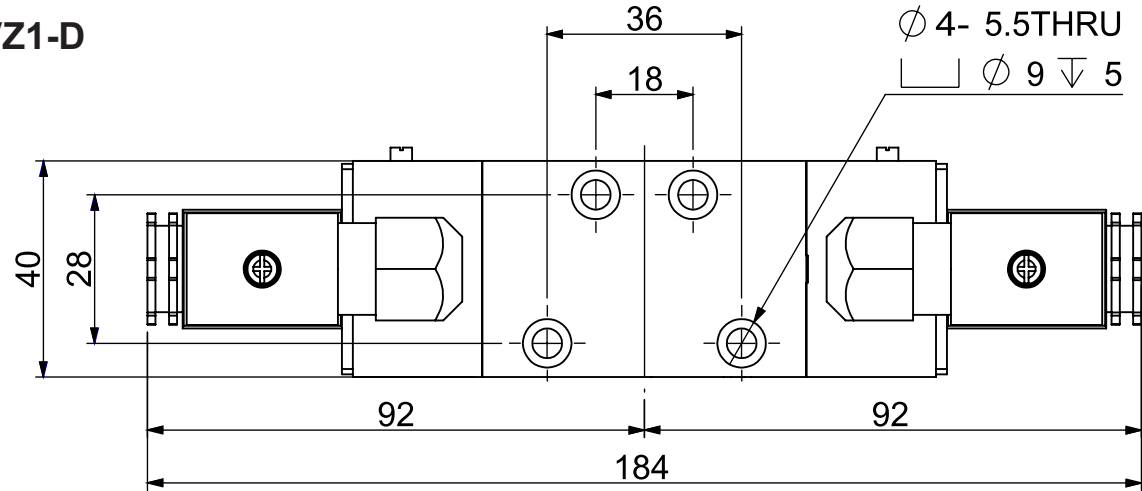
• VZ1-S



Válvula Direcional Solenoide ISO 5999 - Série VZ

Dimensional

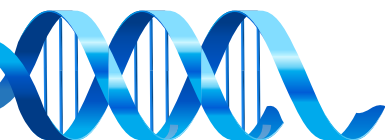
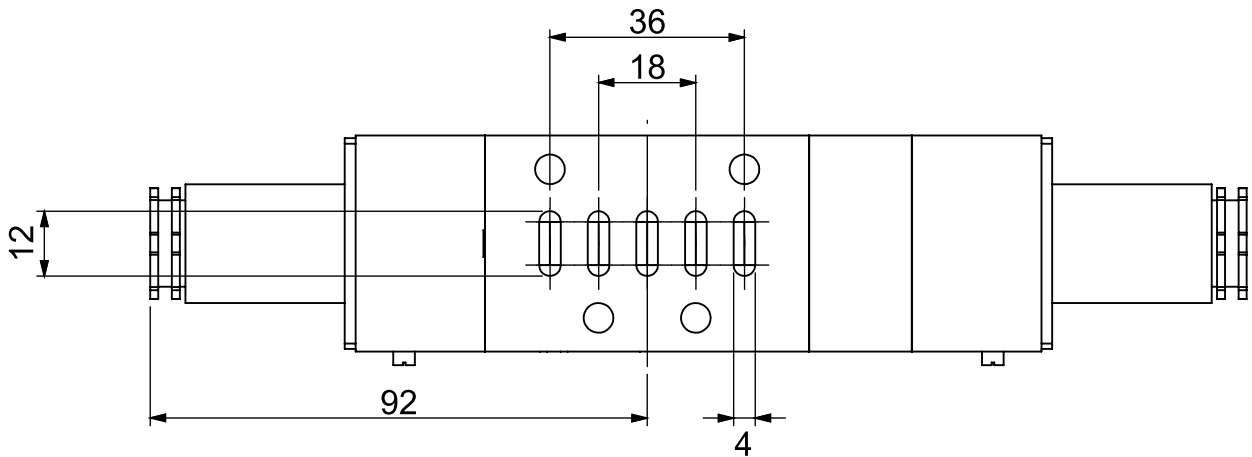
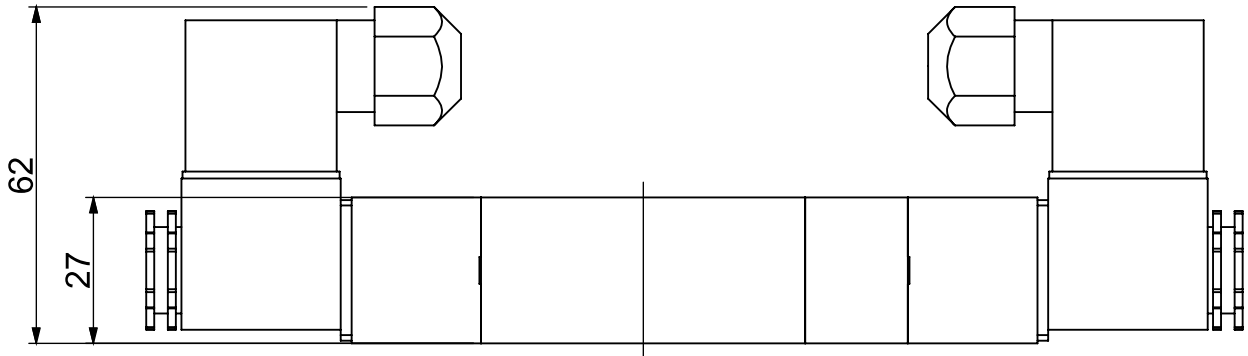
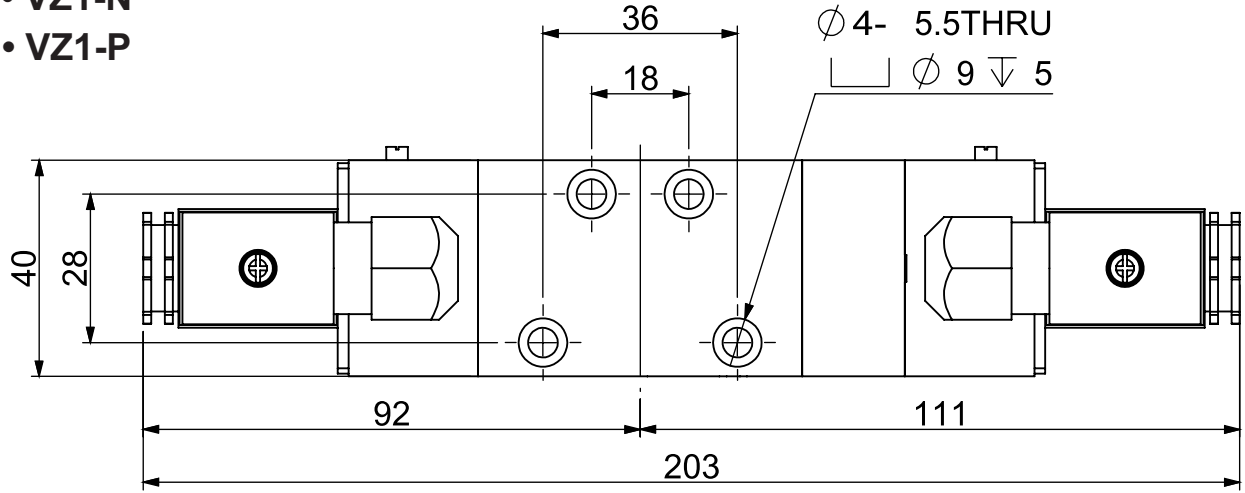
• VZ1-D



Válvula Direcional Solenoide ISO 5599 - Série VZ

Dimensional

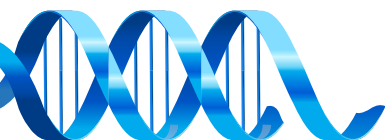
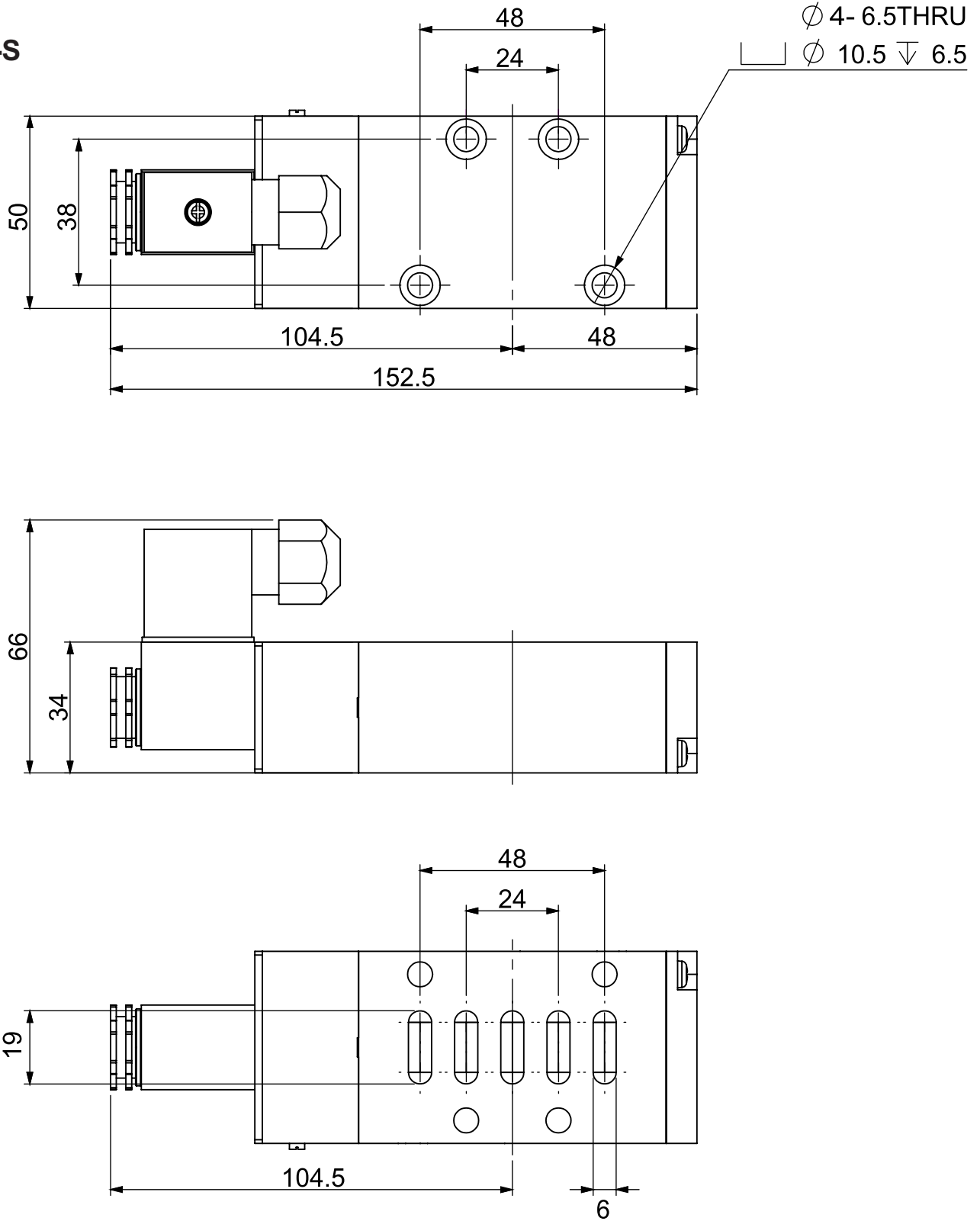
- VZ1-F
- VZ1-N
- VZ1-P



Válvula Direcional Solenoide ISO 5599 - Série VZ

Dimensional - ISO 2

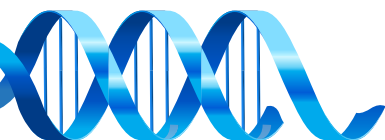
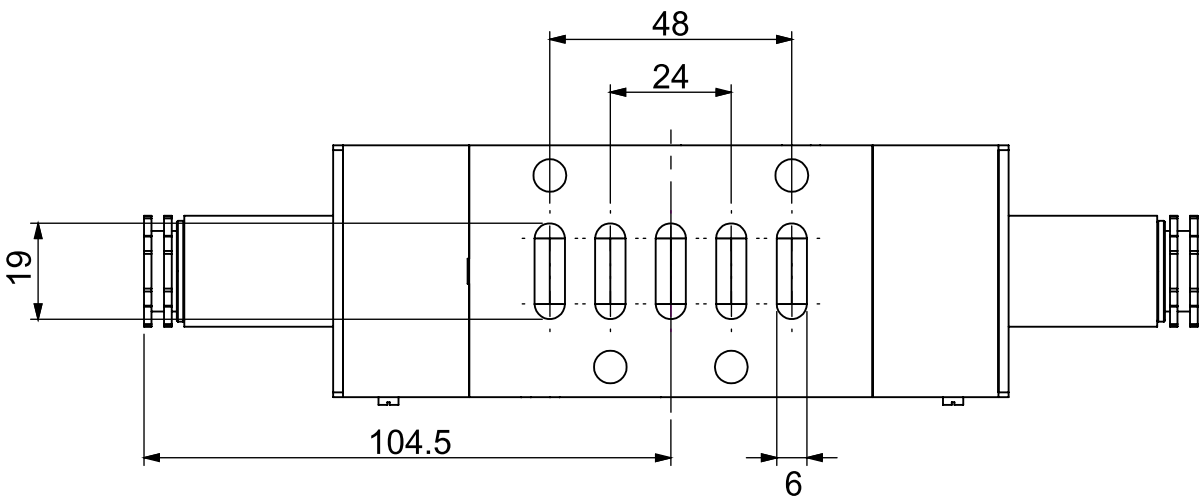
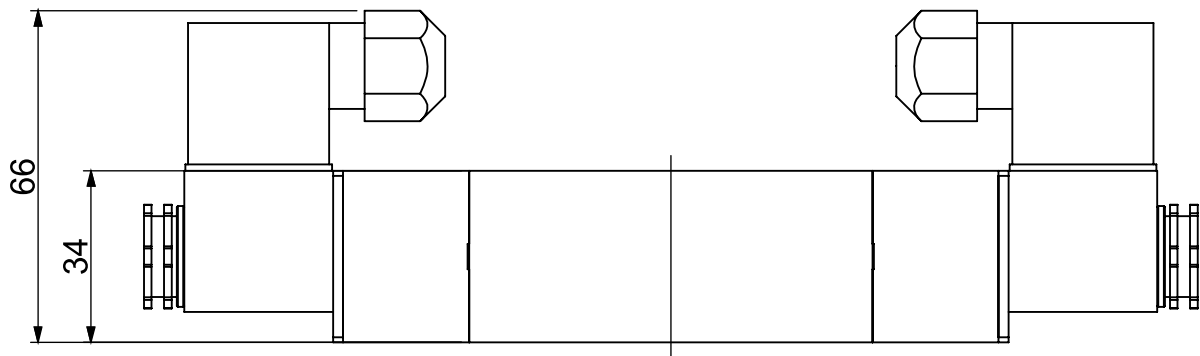
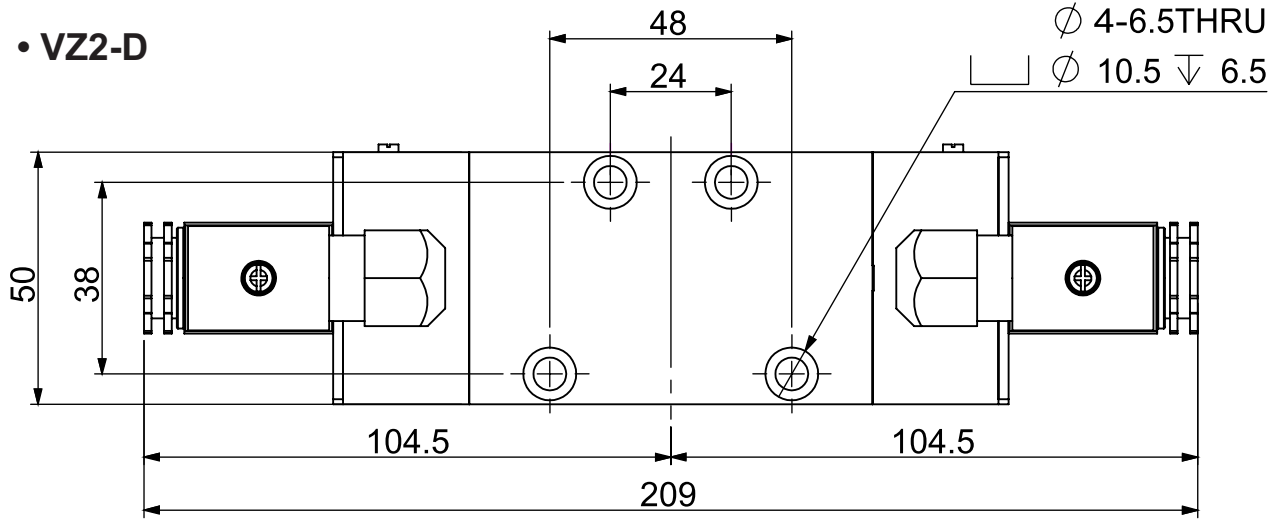
• VZ2-S



Válvula Direcional Solenoide ISO 5599 - Série VZ

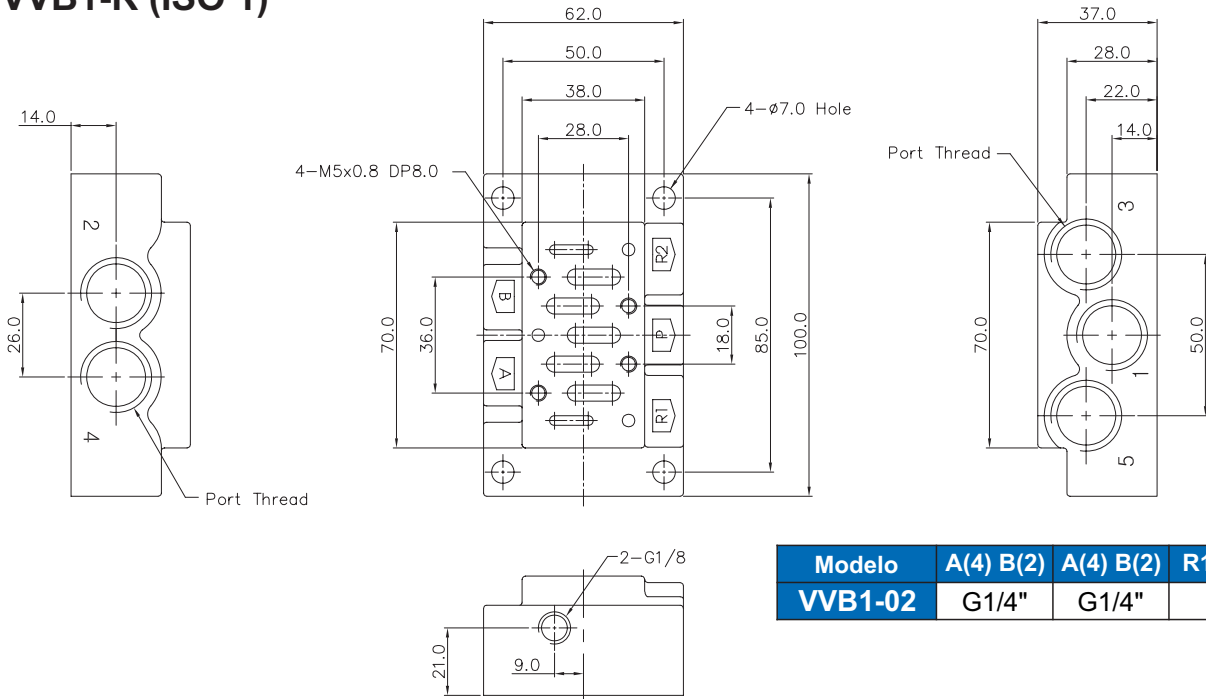
Dimensional

• VZ2-D



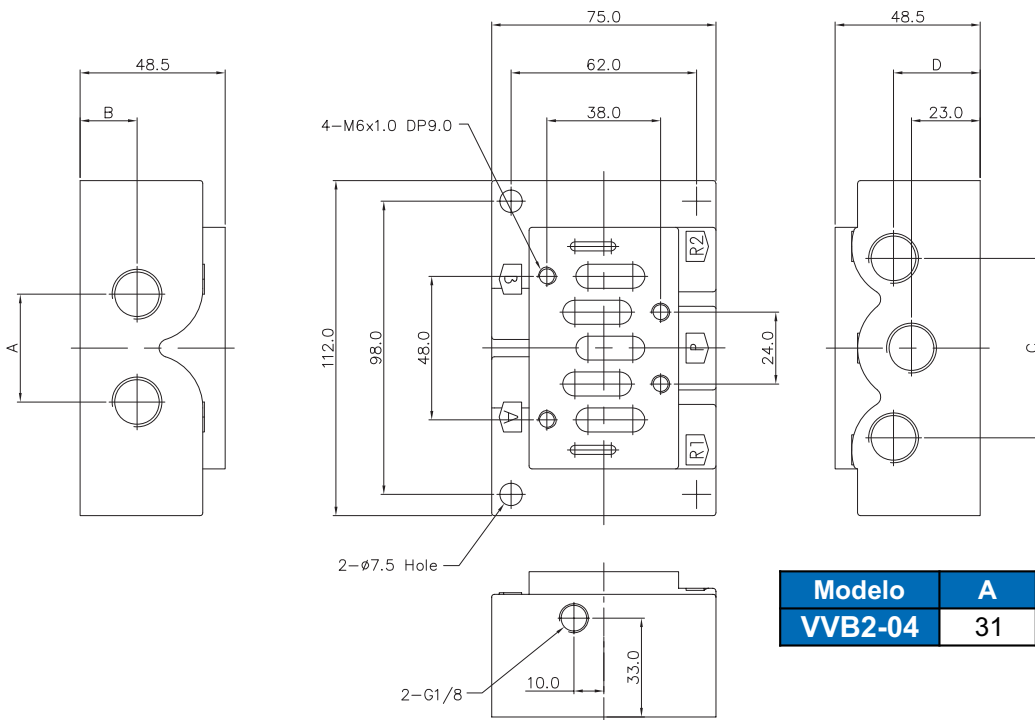
Dimensional - Manifold Individual

• VVB1-R (ISO 1)

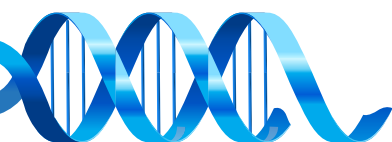


Modelo	A(4) B(2)	A(4) B(2)	R1(5) R2(3)
VVB1-02	G1/4"	G1/4"	G3/8"

• VVB2-R (ISO 2)

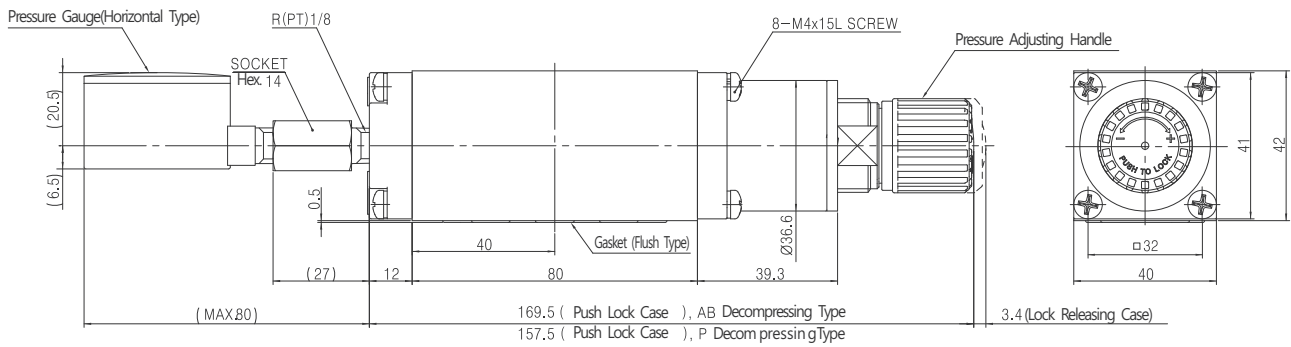
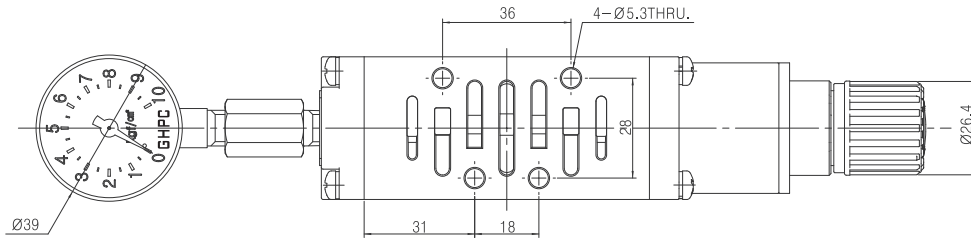


Modelo	A	B	C	D
VVB2-04	31	23	63.2	32

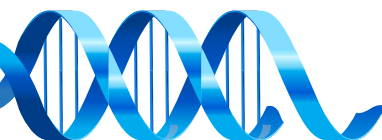
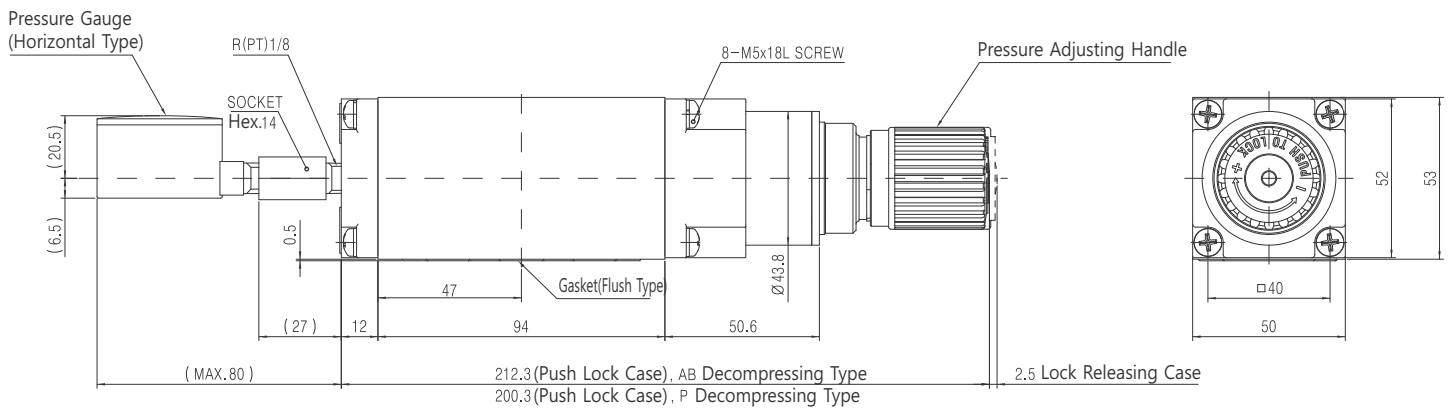
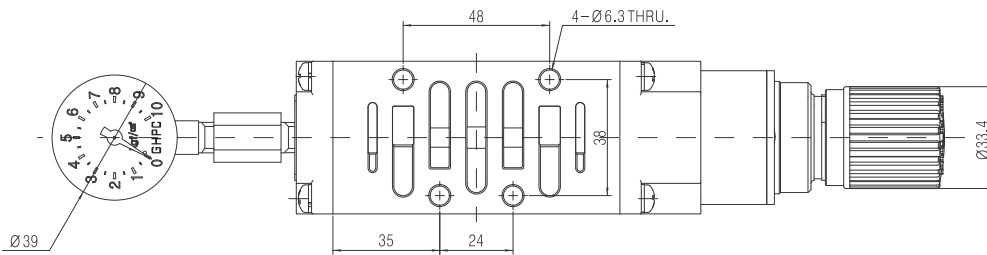


Dimensional - Interface com Regulador de Pressão

• VVB1-R (ISO 1)



• VVB2-R (ISO 2)





Precauções

- Certifique-se de verificar a integridade da peça por completo antes da instalação.
- As aplicações precisam ser tratadas com cuidado e atenção quanto à pressões máximas e mínimas, fluxo requerido, materiais de construção, compatibilidade química, função e tamanho à ser utilizado.
- Garantir a total limpeza dos tubos e conexões antes de serem conectados ao produto.
- Antes de reparar uma peça, sempre desconecte a fonte de alimentação e despressurize o sistema. Deve-se levar em consideração o manuseio seguro da unidade com base no fluido controlado nela.
- Não exceder a pressão máxima de trabalho, afim de evitar danos ao produto, máquina e até mesmo ao operador.

