

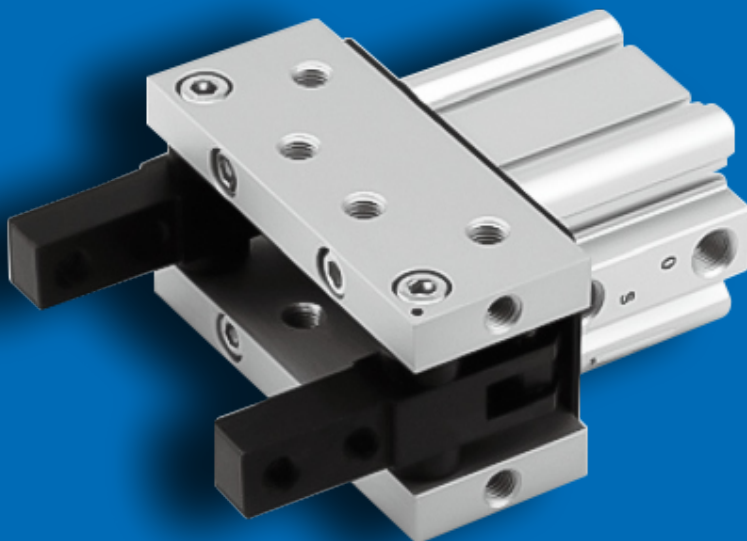


**GHPC**<sup>®</sup>  
Tecnologia em Produtos Pneumáticos

# Catálogo Técnico

## Garra Pneumática com Abertura Angular

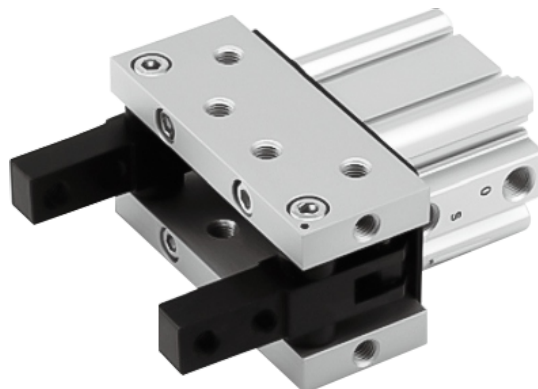
**Série CHT2**



## Garra com Abertura Angular - Série CHT2

### Vantagens

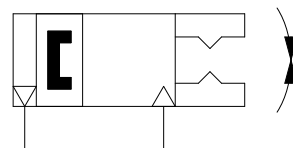
- Montagem do sensor nas 4 faces
- Abertura angular 30°
- Mantém a peça presa mesmo quando o ar é desligado (Segurança)
- Grande robustez e força de aperto



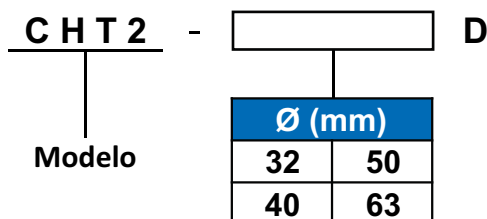
### Características Técnicas

Modelo	CHT2-32D	CHT2-40D	CHT2-50D	CHT2-63D
Ø (mm)	32	40	50	63
Ação	Dupla ação			
Fluído	Ar			
Pressão de Operação	1 ~ 6 Bar			
Temperatura	5 ~ 60°C			
Lubrificação	Não necessita			
Ângulo de abertura total	-3° ~ 28°	-3° ~ 27°	-2° ~ 23°	-2° ~ 23°
Peso (g)	790	1070	1890	2720
Força de Aperto (Valor Efetivo) (N•m)	12.4	36.0	63.0	106

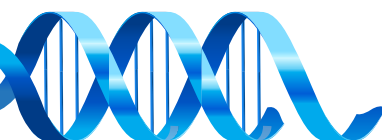
### Simbologia



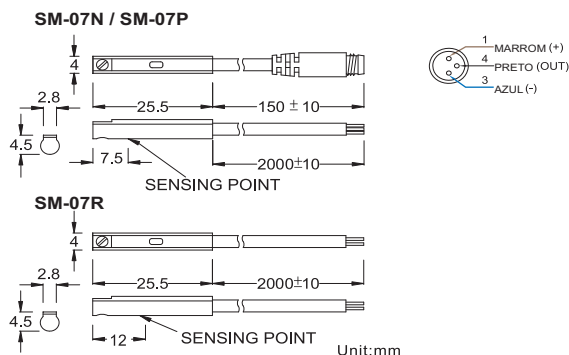
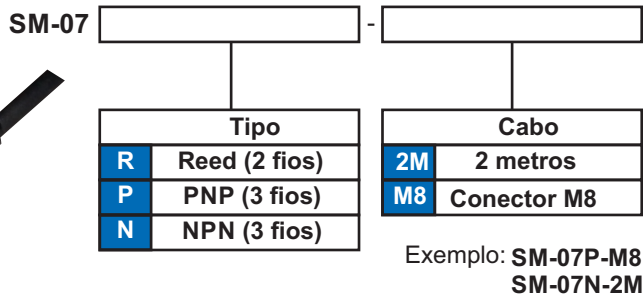
### Codificação



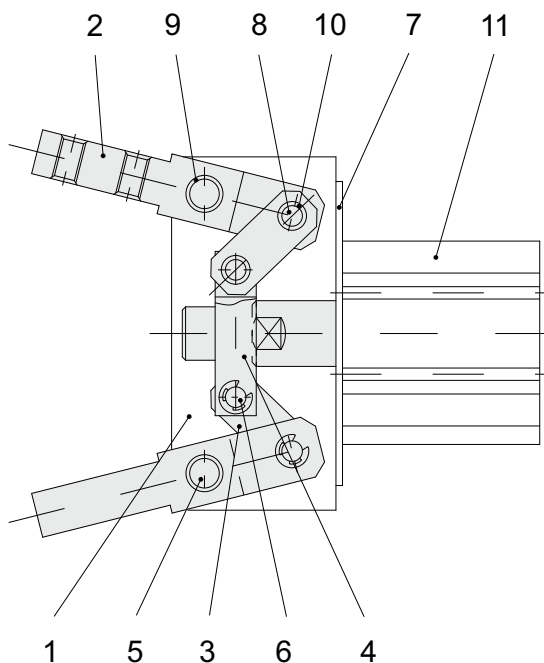
Exemplo: CHT2-50D / CHT2-32D



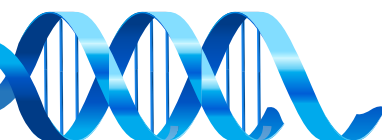
## Sensor Aplicável



## Construção

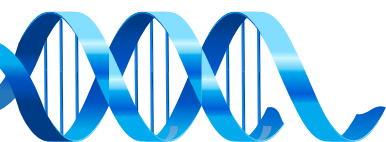
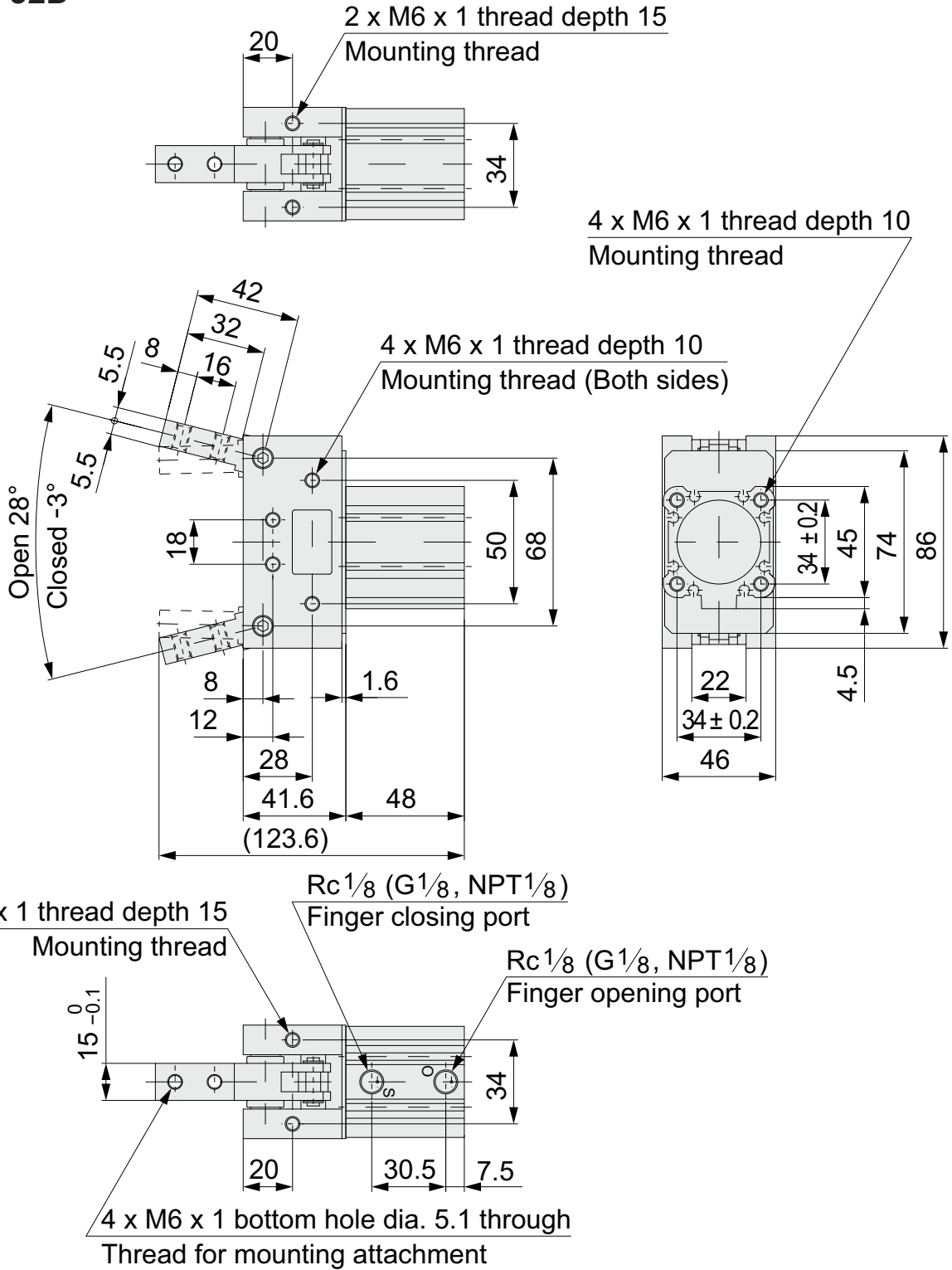


No.	Descrição	Material	Notas
1	Placa Lateral	Alumínio	Anodizado duro
2	Dedo	Aço Carbono	Zinco Cromado Preto
3	Alavanca	Aço Carbono	Zinco Cromado Preto
4	Articulação	Aço Carbono	Zinco Cromado Preto
5	Eixo	Aço INOX	
6	Pino de Junta	Aço INOX	
7	Placa de Cilindro	Aço Macil	Zinco Cromado Preto
8	Pino de alavanca	Aço INOX	
9	Rolamento		Rolamento de resina de acetal revestido em aço
10	Rolamento		Rolamento de resina de acetal revestido em aço
11	Cilindro		

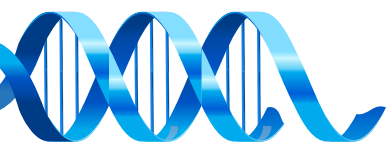
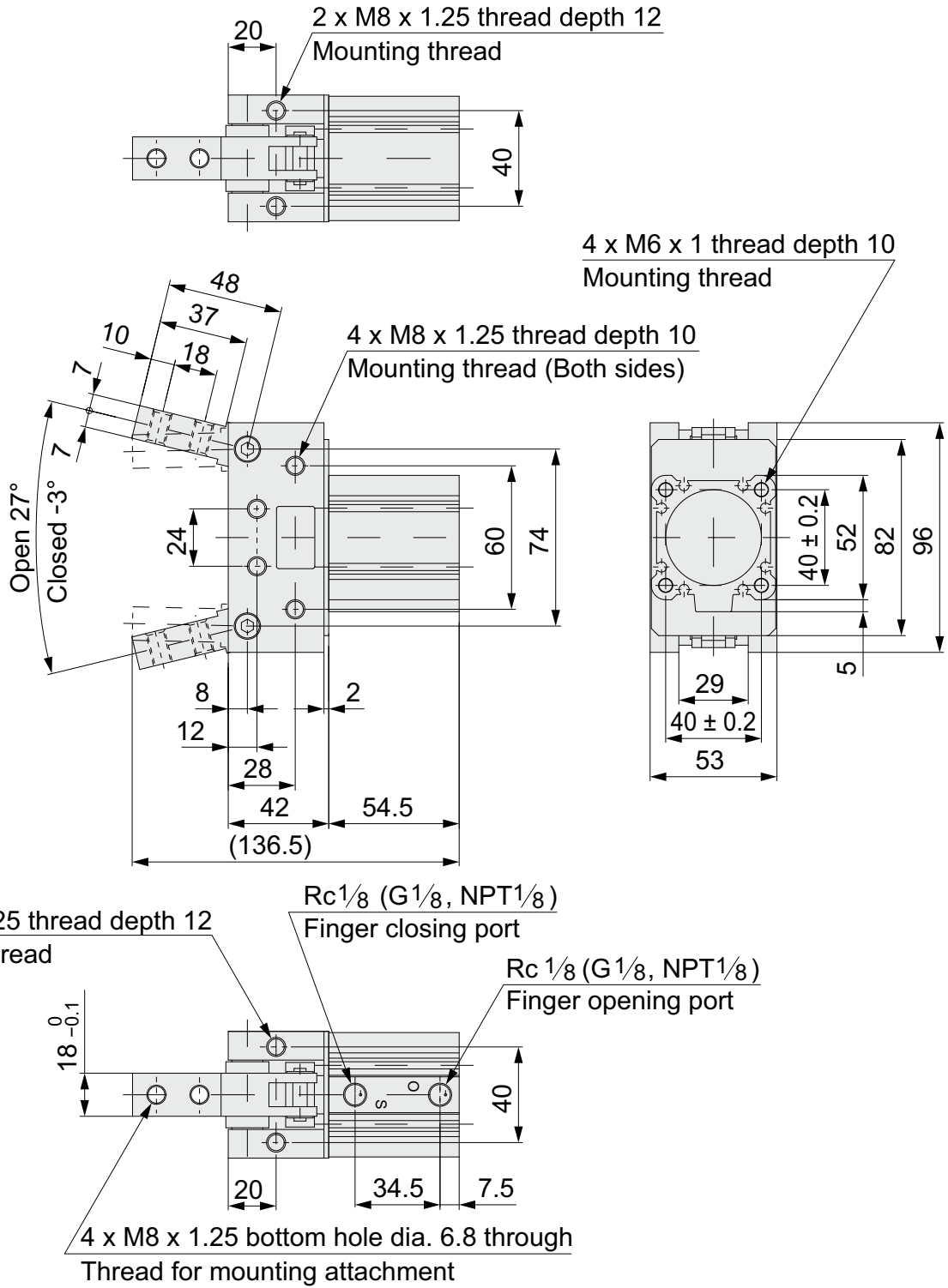


**Dimensional**

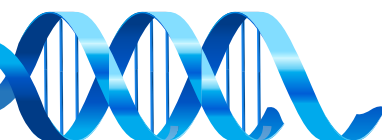
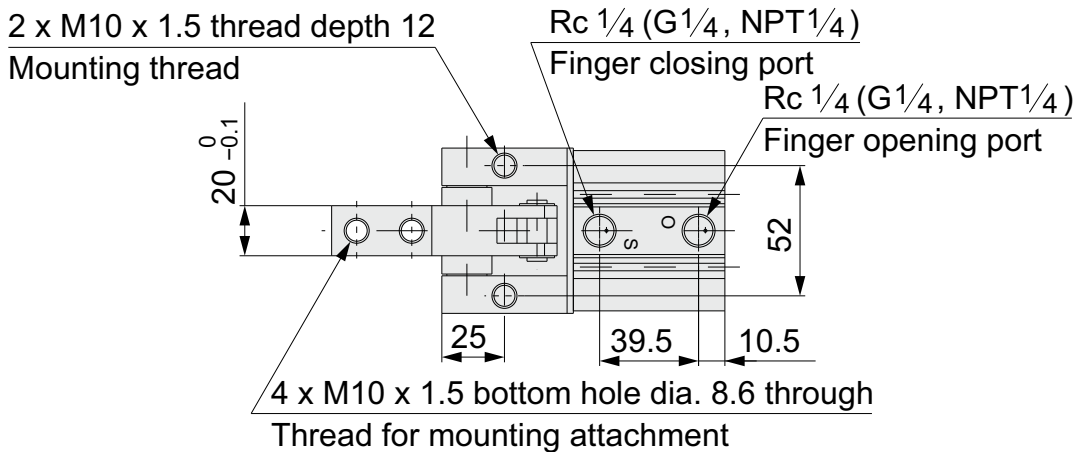
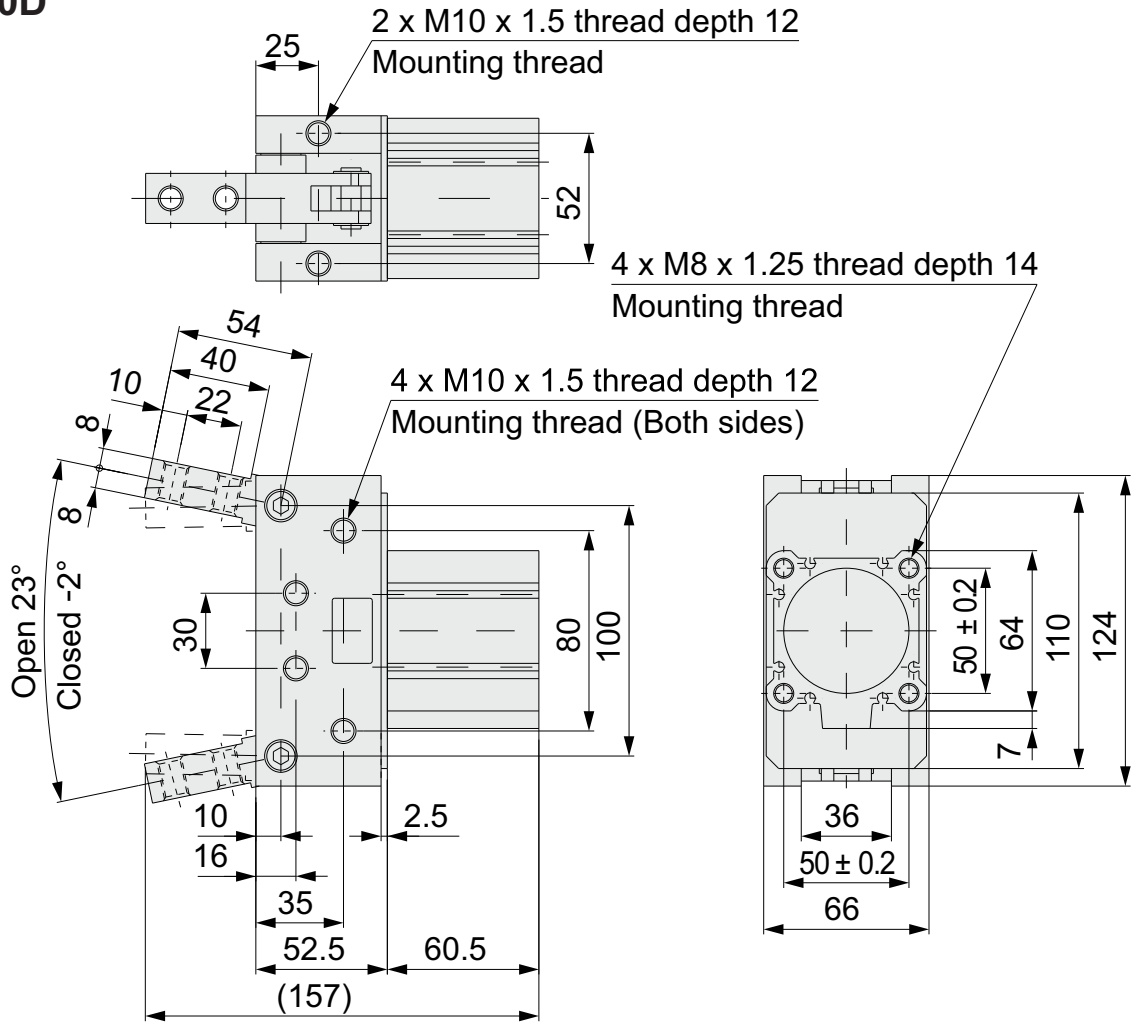
• **CHT2-32D**



• CHT2-40D



• CHT2-50D



• CHT2-63D

