



**GHPC**<sup>®</sup>  
Tecnologia em Produtos Pneumáticos

# Catálogo Técnico

## Atuador Pneumático Compacto Guiado

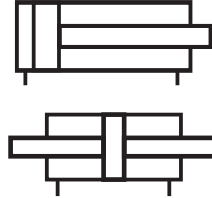
**Série CCNG**



## Atuador Compacto com Guias - Série CCNG

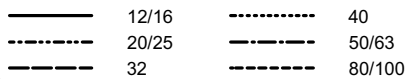
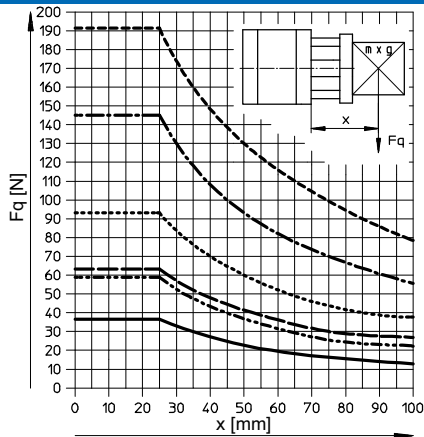


### Simbologia

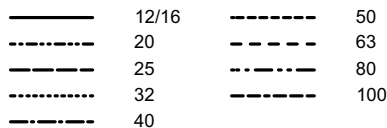
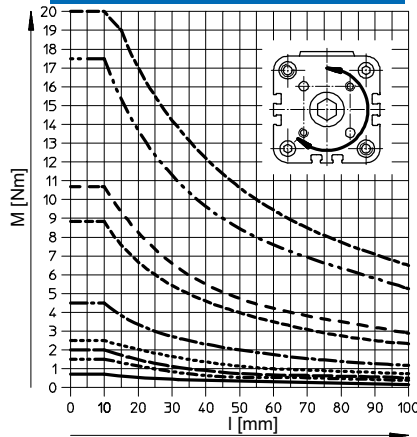


### Características Técnicas

Máxima força lateral  $F_q$  em função do movimento X



Torque M em função do curso máximo



MODELO	CCNG	
Funcionamento	Dupla Ação	
Ø Embolo (mm)	12, 16, 20, 25	32, 40, 50, 63, 80, 100
Rosca Alimentação	M5 x 0.8	G1/8
Fluido	Ar Comprimido	
Pressão de Operação	0.5~10Bar	
Pressão de Teste	15Bar	
Amortecimento	Borracha Nitrílica	
Velocidade	50~500 mm/sec	
Lubrificação	Óleo ISO VG32	
Tolerância de Curso	+0~+1.0 mm	
Temperatura	-5°C~+60°C (Sem Congelamento)	
Sensor Aplicavel	SM-39	

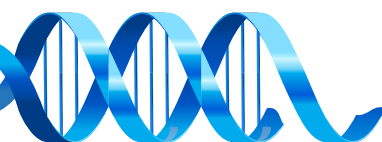
### Codificação

C C N G  
Cilindro Compacto Normalizado e Magnético Guiado

Diâmetro (mm)	
12	40
16	50
20	63
25	80
32	100

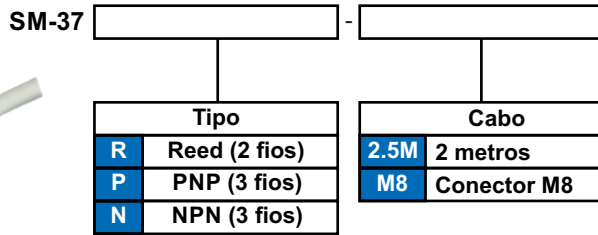
Curso máx.
Ø12, 16: 1 ~ 150mm
Ø20, 25, 32: 3 ~ 200mm
Ø40, 50, 63 80, 100: 5 ~ 300mm

Haste	
---	Simples
P	Passante

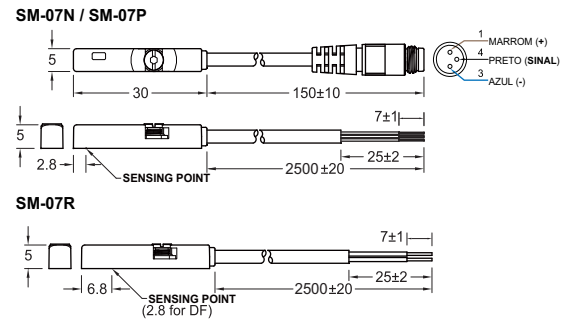


## Atuador Compacto com Guias - Série CCNG

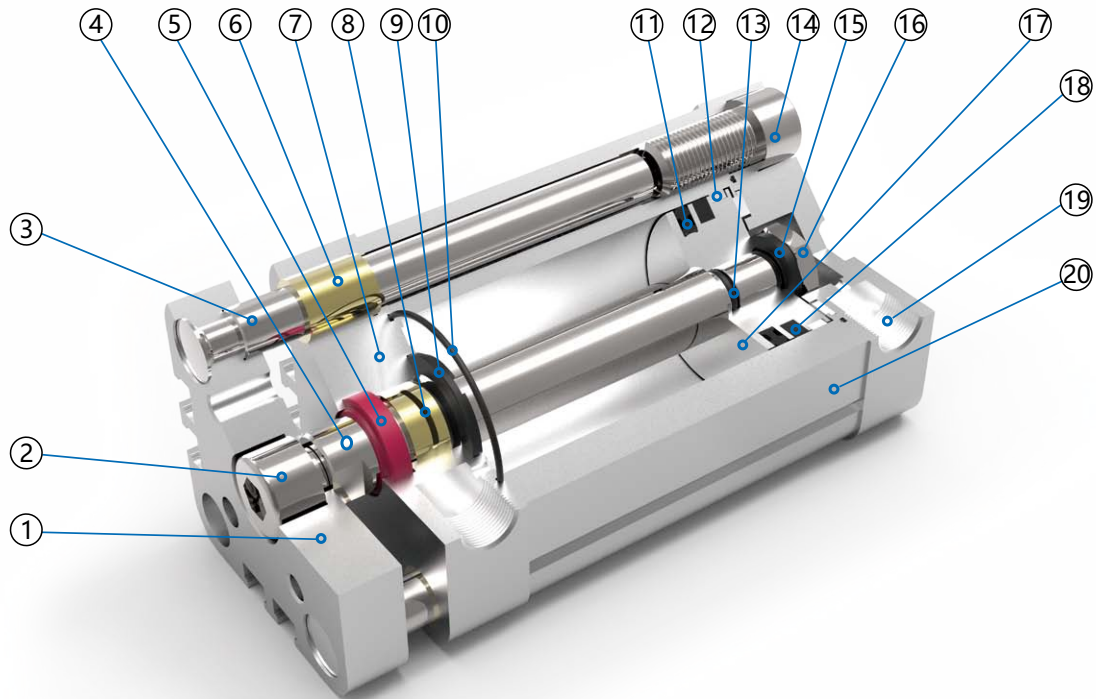
### Sensor Aplicável



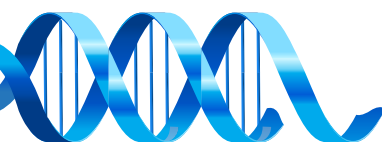
Exemplo: **SM-37P-M8**  
**SM-37N-2M**



### Características Técnicas

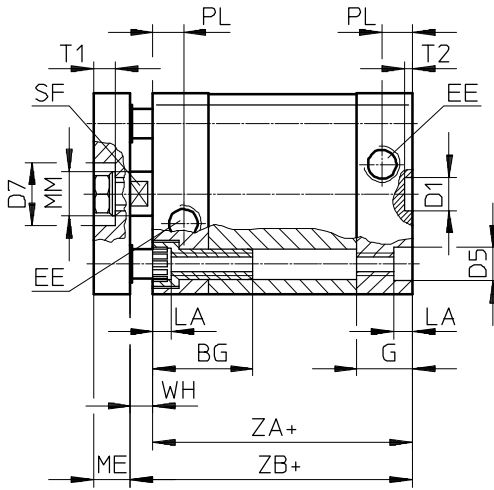


Numero	Nome	Numero	Nome
1	Tampa Dianteira para Fixação Guias	11	Vedação do Embolo
2	Parafuso de Fixação Guias	12	Anel de Desgaste
3	Haste das Guias	13	O ring
4	Haste do Cilindro	14	Parafuso de Fixação Tampa Traseira
5	Raspador	15	Vedação Haste
6	Bucha das Guias	16	Parafuso Fixação Haste
7	Tampa Dianteira	17	Embolo
8	Bucha da Haste Cilindro	18	Anel Magnético
9	Amortecedor Elástico	19	Alimentação de Ar
10	O ring	20	Camisa

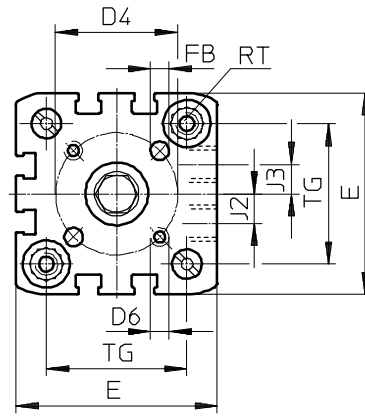


**Atuador Compacto com Guias - Série CCNG**

Ø 12 ... 63

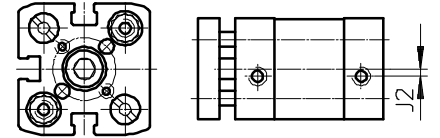


**32 ... 63**

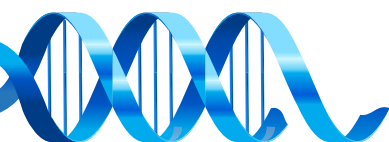
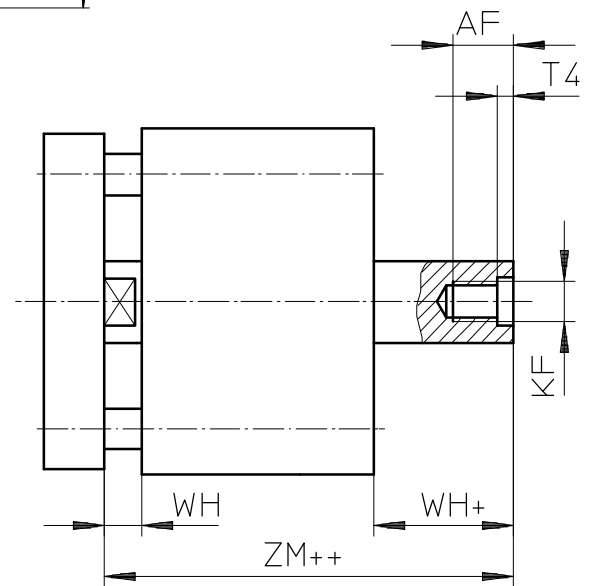
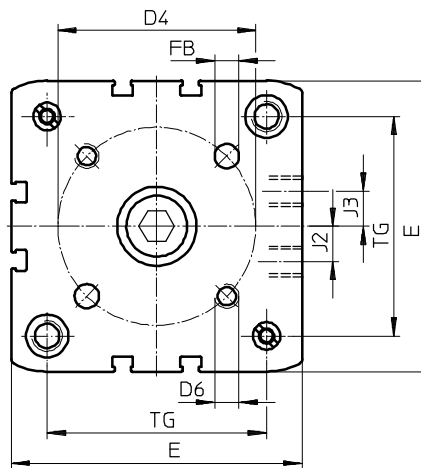
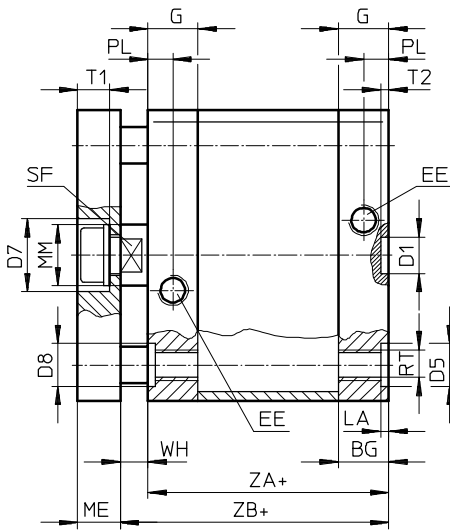


**12 ... 25**

**12**



Ø 80 ... 100

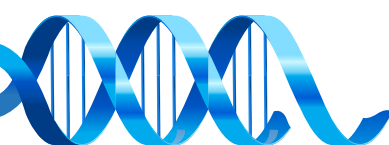


**Atuador Compacto com Guias - Série CCNG**

Ø [mm]	BG min.	D1 Ø H9	D4 ±0,1	D5 Ø	D6	D7 Ø H9	D8	E	EE	FB Ø H8	G	J2	J3
12	17	9	12	6F <sup>9</sup>	M3	-	-	27.5 <sup>+0.3</sup>	M5	3	10.5	2	-
16			14					29 <sup>+0.3</sup>			11		
20	19.5		17	9F <sup>9</sup>	M4	14		35.5 <sup>+0.3</sup>		4	12	2.6	
25			22					39.5 <sup>+0.3</sup>					
32	26		28		M5	17		47 <sup>+0.3</sup>		5	15	6	
40			33					54.5 <sup>+0.3</sup>					
50	27	12	42	12F <sup>9</sup>	M6	22	-	65.5 <sup>+0.3</sup>	G1/8	6	16.5	8	
63			50					75.5 <sup>+0.3</sup>					
80	17		65	15	M8	24		14		95.5 <sup>+0.6</sup>	8	11.5	
100			21.5							80			M10

Ø [mm]	LA +0.2	ME	MM Ø h8	PL +0.2	RT	SF h13	T1	T2 +0.1	TG ±0.2	WH		ZA ±0.3	ZB					
										+1.3	PPS +1.4		+1.2	PPS +1.3				
12	3.5	6	6	6	M4	5	-	2.1	16	4.2	-	35	39.2	-				
16			8			7			18	4.7			39.7					
20	5	8	10		M5	9			5	2.1	22	5.5	5.5	37	42.5	42.5		
25			10			12					M6	10	6	32.5	6	6.5	5.5	39
32		12	16		8.2	M8			13			7.5	2.6		38	6.1	6.6	44
40											20			10.5	M10	17	10.5	46.5
50		2.6	14	10.5	M10	17	10.5	56.5	7.5			8						
63								14	10.5		M10	17		10.5	10.5	72	8.9	9.4
80	2.6	14	10.5	M10	17	10.5	10.5			89						9	9.8	67
100								2.6	14	10.5	M10	17		10.5	10.5	89	9	9.8

Ø [mm]	AF min.	KF	T4	WH		ZM	
				+1.3	PPS +1.4		PPS
12	8	M3	1.5	4.2	-	44.5 <sup>+0.5</sup>	-
16	10	M4		4.7		45.7 <sup>+0.5</sup>	
20	14	M6	2.6	5.5	-	49.5 <sup>+0.5</sup>	49.5 <sup>+0.5</sup>
25				5.5		51.5 <sup>+0.5</sup>	51.5 <sup>+0.5</sup>
32	16	M8	3.3	6	6.5	57.5 <sup>+0.5</sup>	58.6 <sup>+0.6</sup>
40				6.1	6.6	58.6 <sup>+0.6</sup>	59.7 <sup>+0.7</sup>
50	20	M10	4.7	8.2	8.2	62.0 <sup>+0.6</sup>	63.1 <sup>+0.7</sup>
63				8.1	8	65.4 <sup>+0.6</sup>	66.5 <sup>+0.7</sup>
80				8.9	9.4	73.2 <sup>+0.6</sup>	74.3 <sup>+0.7</sup>
100				9	-	86.4 <sup>+0.6</sup>	88 <sup>+0.7</sup>



**Atuador Compacto com Guias - Série CCNG**
**Acessórios de Montagem**
**Fixação tipo Pés**


Código (Ø)
L32
L40
L50
L63
L80
L100
L125
L160
L200

**Fixação Traseira Macho**

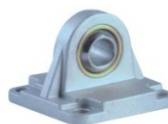

Código (Ø)
C32
C40
C50
C63
C80
C100
C125
C160
C200

**Fixação Traseira Fêmea**


Código (Ø)
D32
D40
D50
D63
D80
D100
D125
D160
D200

**Fixação Traseira Macho Deslocado**

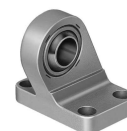

Código (Ø)
E32
E40
E50
E63
E80
E100
E125

**Fixação Traseira Macho c/ Rótula**


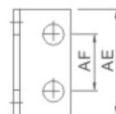
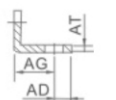
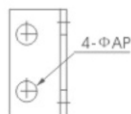
Código (Ø)
CS32
CS40
CS50
CS63
CS80
CS100

**Fixação tipo Flange**

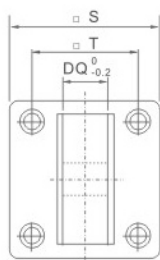
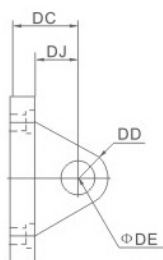

Código (Ø)
F32
F40
F50
F63
F80
F100
F125
F160
F200

**Fixação Traseira Macho Deslocado c/ Rótula**


Código (Ø)
ES32
ES40
ES50
ES63
ES80
ES100
ES125
ES160
ES200

**Dimensional**
**• Fixação tipo Pés**


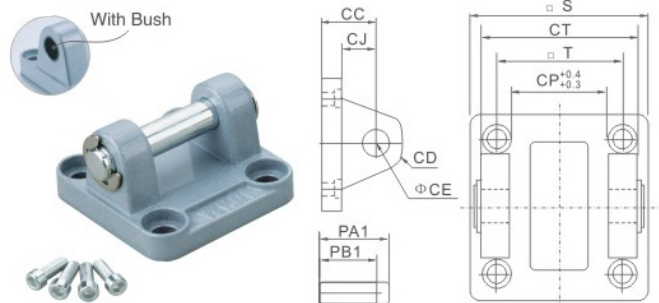
Symbol/Bore	32	40	50	63	80	100	125	160	200
AD	8	9	10	12	19	19	20	20	30
AE	47	53	65	75	95	115	140	180	220
AF	32	36	45	50	63	75	90	115	135
AG	24	28	32	32	41	45	45	60	70
AP	7	9	9	9	12	14.5	16.5	18.5	24
AT	3	3	3	3	4	4	6	6	9

**• Fixação Traseira Macho**


Symbol/Bore	32	40	50	63	80	100	125	160	200
S	47	53	65	75	95	115	140	180	220
T	32.5	38	46.5	56.5	72	89	110	140	175
DC	22	25	27	32	36	41	50	55	60
DD	9	12	12	15	15	20	25	30	30
DE	10	12	12	16	16	20	25	30	30
DJ	13	16	17	22	22	27	33	35.5	36
DQ	25.8	27.8	31.7	39.7	49.7	59.7	69.7	89.7	89.7

## Atuador Compacto com Guias - Série CCNG

### • Fixação Traseira Fêmea



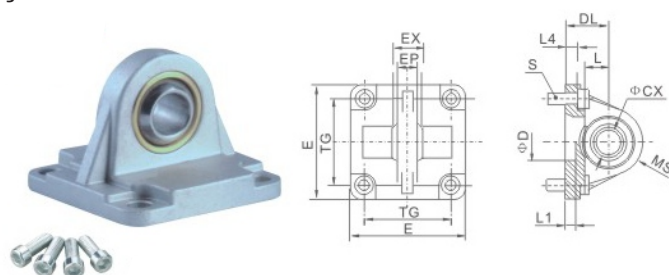
Symbol/Bore	32	40	50	63	80	100	125	160	200
CC	22	25	27	32	36	41	50	55	60
CD	9	12	12	15	15	20	25	30	30
CE	10	12	12	16	16	20	25	30	30
CJ	13	16	17	22	22	27	31	35.5	36
CP	26	28	32	40	50	60	70	90	90
CT	45	52	60	70	90	110	130	170	170
PA1	51	59	67	77	97	119	139	181	181
PB1	45.5	52.5	60.5	70.5	90.5	110.5	130.5	170.5	170.5
S	47	53	65	75	95	115	140	180	220
T	32.5	38	46.5	56.5	72	89	110	140	175

### • Fixação Traseira Macho Deslocado



Symbol/Bore	32	40	50	63	80	100	125
A	6.6	6.6	9	9	11	11	14
B	11	11	15	15	18	18	20
BG	18	22	30	35	40	50	60
BH	31	35	45	50	60	70	90
BI	21	24	33	37	47	55	70
BL	8	10	12	14	14	17	20
BM	32	36	45	50	63	71	90
BN	38	41	50	52	66	76	94
BO	51	54	65	67	86	96	124
BS	10	15	16	16	20	20	30
BR	20	22	26	30	30	38	45
C	1.6	1.6	1.6	1.6	2.5	2.5	3.2
D	10	12	12	16	16	20	25
F	10.5	10.5	10.5	10.5	10.5	10.5	10.5
G	3	3	3	3	3	3	3
BQ	26	28	32	40	50	60	70

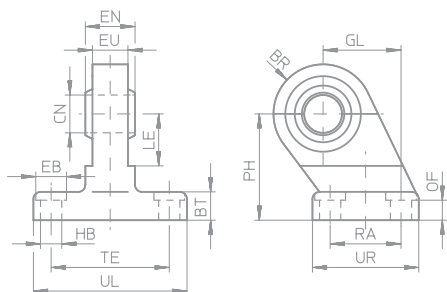
### • Fixação Traseira Macho com Rótula Esférica



Symbol/Bore	32	40	50	63	80	100
TG	32.5	38	46.5	56.5	72	89
ΦCX	10	12	16	16	20	20
DL	22	25	27	32	36	41
L	12	15	15	20	20	25
EX	14	16	21	21	25	25
EP	10.5	12	15	15	18	18
S	M6×20	M6×20	M8×20	M8×20	M10×25	M10×25
L4	5.5	5.5	6.5	6.5	10	10
D	30	35	40	45	45	55
L1	7	7	7	7	9	9
E	45	52	65	75	95	115
MS	16	18	21	23	28	30

## Atuador Compacto com Guias - Série CCNG

### • Fixação Traseira Macho Deslocado com Rótula Esférica



Symbol/Bore	32	40	50	63	80	100	125
BR	15	17	20	22	27	29	39
BT	10	10	12	12	14	15	20
ØCN	10	12	16	16	20	20	30
ØEB	11	11	14	14	17	17	19
EN	14	16	21	21	25	25	37
ER	15.5	17.5	20.5	22.5	28.5	29.5	39.5
EU	10.5	12	15	15	18	18	25
GL	21	24	33	37	47	55	70
HB	6.6	6.6	9	9	10	10	14
LE	16	20	24	27	31	38	50
OF	9	9	11	11	12.5	13.5	18.5
PH	32	36	45	50	63	71	90
RA	18	22	30	35	40	50	60
TE	38	41	50	52	66	76	94
UL	51	54	65	67	86	96	124
UR	31	35	45	50	60	70	90