

Catálogo Técnico

Atuador Pneumático Perfilado/Tirantado

Série CPB/CTB



Vantagens

- Baixo Custo
- Movimentação suave e Precisa
- Rosca da Haste com tratamento anti corrosão
- Alta capacidade de carga
- Variedade de tamanhos



Características Técnicas

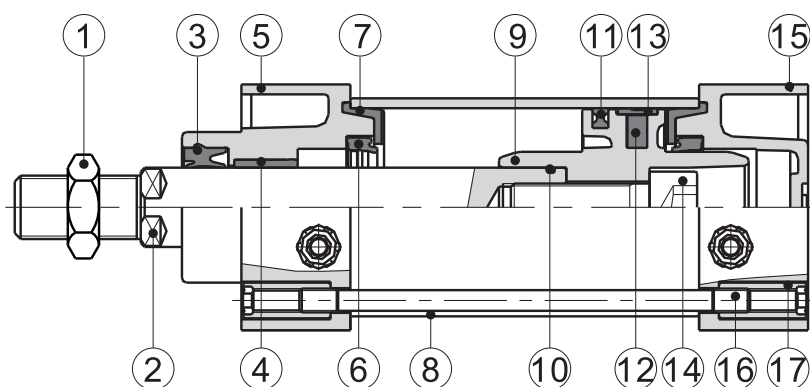
Ø (mm)	32	40	50	63	80	100	125	160	200
Conexão	1/8"	1/4"		3/8"		1/2"		3/4"	
Ação	Dupla Ação								
Fluído	Ar Filtrado								
Pressão de Operação	1.5 ~ 10 Bar								
Pressão Máx. Teste	15 Bar								
Temperatura	-20° ~ 70°C								
Velocidade	30 ~ 800 mm/s								
Tolerância de Curso	0~250 $^{+1.0}_0$, 25~1000 $^{+1.5}_0$, 1001~1500 $^{+2.0}_0$								
Amortecimento	Regulável								
Lubrificação	Não necessária								

Codificação

C **B** -

Perfil		Ø (mm)		Curso
P	Perfilado	32	100	Até 2000mm
T	Tirantado	40	125	
		50	160	
		63	200	
		80	*Ø125, 160 e 200 somente CTB	

Construção



NO.	Item	Material
1	Porca da Haste	Aço Carbono
2	Haste	Aço Carbono com Cromo 20µm
3	Gaxeta Raspadora	TPU
4	Bucha Raspadora	Latão
5	Cabeçote Dianteiro	Alumínio
6	Oring	NBR
7	Gaxeta Amortecimento	TPU
8	Camisa	Alumínio
9	Pistão	Alumínio
10	Oring da Haste	NBR
11	Vedação Êmbolo	NBR
12	Magnético	Imã
13	Raspador	NO.
14	Parafuso de Haste	Aço Carbono
15	Cabeçote Traseiro	Alumínio
16	Tirante (Série CTB)	Aço Carbono
17	Porca Tirante (Série CTB)	Aço Carbono

Sensor Aplicável

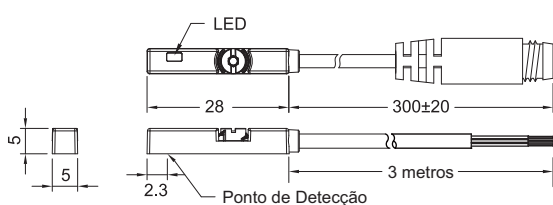


S M - 6 5

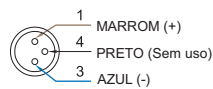
[]		[]	
Tipo			
R	Reed (2 fios)		
P	PNP (3 fios)		
N	NPN (3 fios)		
RP	Reed (3 fios)		
		Cabo	
3M	3 metros		
M8	Conector M8		

Modelo	SM-65R	SM-65N	SM-65P	SM-65RP
Diagrama				
Características				
Método de Fiação	2 Fios	3 Fios		
Lógica	SPST	Solid State Output		SPST
Tipo de Sensor	Reed Switch	NPN	PNP	Reed Switch
Tensão de Operação	5~240V DC/AC	10~28V DC		10~30V DC/AC
Corrente	100mA max.	200mA max.		500mA max.
Contato	10W max.	5.5W max.		10W max.
Consumo Atual	-	10mA @ 24V DC max.		10mA @ 24V DC max.
Queda de Voltagem	3.0V max.	1.5V max.		0.1V @ 100mA max.
Fuga de Corrente	-	0.05mA max.		-
Indicador (LED)	Vermelho		Amarelo	
Cabo	ø2.8, 2C, PUR	ø2.8, 3C, PUR		
Frequência	200Hz	1000Hz max.		200Hz
Exigência de Imã	75Gauss	50Gauss		65Gauss
Temperatura	-10~70 °C			
Choque	30G	50G		30G
Vibração	9G			
Classificação	IEC 60529 IP67			
Circuito de Proteção	1	2,3,4		1

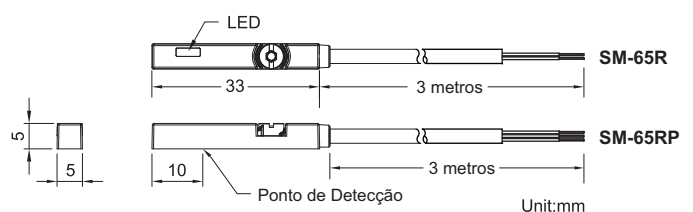
• SM-65N / SM-65P



• CONECTOR M8



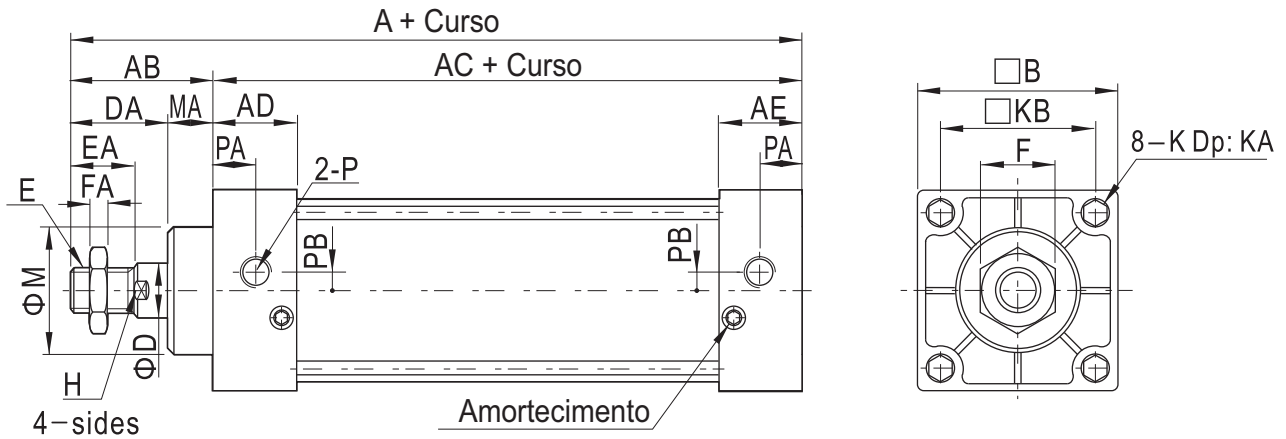
• SM-65R / SM-65RP



Unit:mm

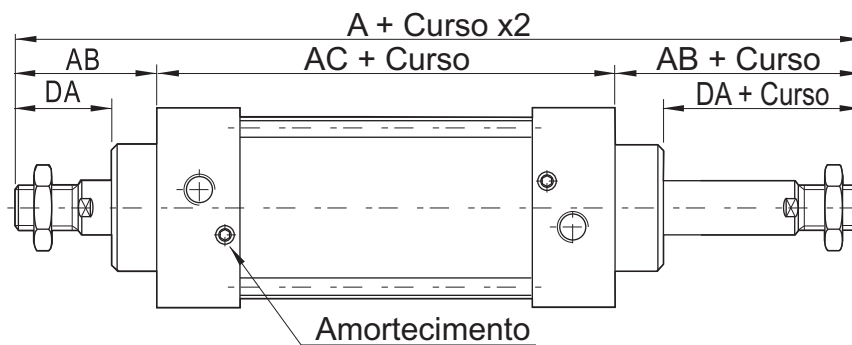
Dimensional - Ø32 à 100

• Padrão



Ø(mm)	A	AB	AC	AD	AE	B	D	DA	E	EA	F	FA	H	K	KA	KB	M	MA	P	PA	PB
32	140	47	93	27.5	27.5	45	12	32	M10×1.25	22	17	6	10	M6×1.0	14.5	33	28	15	1/8"	14	5.5
40	142	49	93	27.5	27.5	50	16	34	M12×1.25	24	17	7	13	M6×1.0	14.5	37	32	15	1/4"	15	6
50	150	57	93	27.5	27.5	62	20	42	M16×1.5	32	23	8	17	M6×1.0	14.5	47	38	15	1/4"	17	8.5
63	153	57	96	27.5	27.5	75	20	42	M16×1.5	32	23	8	17	M8×1.25	14.5	56	38	15	3/8"	15	9.5
80	182	75	107	33	33	94	25	54	M20×1.5	40	26	10	22	M10×1.5	17	70	47	21	3/8"	19.5	10
100	188	75	113	33	33	112	25	54	M20×1.5	40	26	10	22	M10×1.5	17	84	47	21	1/2"	16.5	11

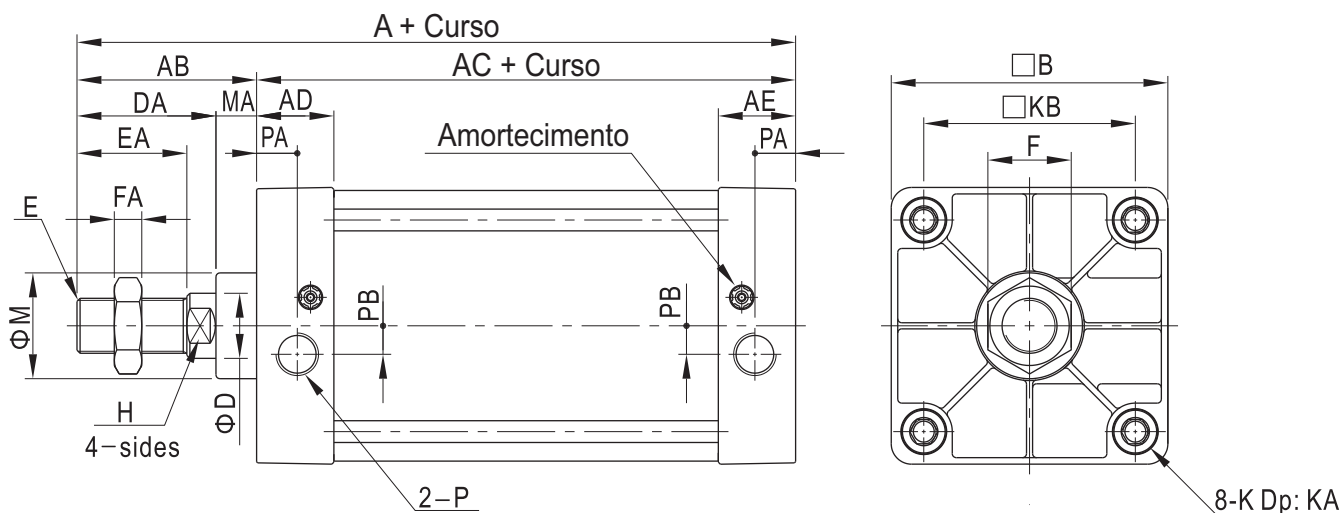
• Haste Passante



Ø (mm)	A	AB	AC	DA	DB	E	FA
32	187	47	93	32	27	M10X1.25	6
40	191	49	93	34	28	M12X1.25	7
50	207	57	93	42	29	M16X1.5	8
63	210	57	96	42	29	M16X1.5	8
80	257	75	107	54	35.5	M20X1.5	10
100	263	75	113	54	35.5	M20X1.5	10

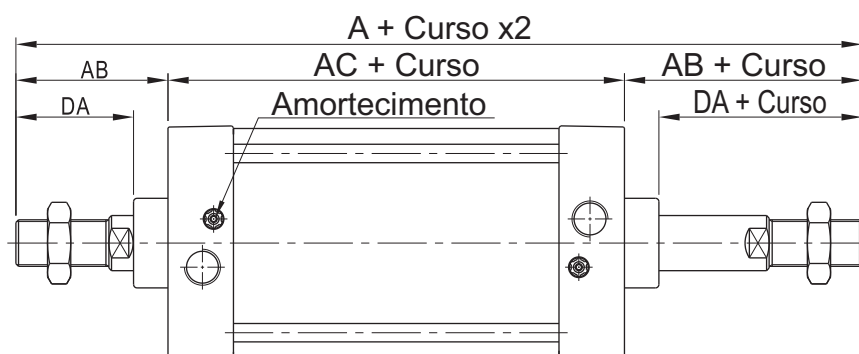
Dimensional - Ø125 à 200 (Somente CTB)

• Padrão



Ø(mm)	A	AB	AC	AD	AE	B	D	DA	E	EA	F	FA	H	K	KA	KB	M	MA	P	PA	PB
125	203	88	115	38	38	136	32	68	M27×2.0	54	41	13.5	27	M12×1.75	21.5	110	52	20	1/2"	20	14
160	239	113	126	38	38	174	40	88	M36×2.0	72	55	18	36	M16×2.0	21	134	62	25	3/4"	20	15
200	244	118	126	38	38	214	40	88	M36×2.0	72	55	18	36	M16×2.0	21	163	62	30	3/4"	20	15

• Haste Passante



Ø (mm)	A	AB	AC	DA	DB	E	FA
125	291	88	115	68	42.5	M27X2.0	13.5
160	352	113	126	88	68	M36X2.0	18
200	362	118	126	88	68	M36X2.0	18

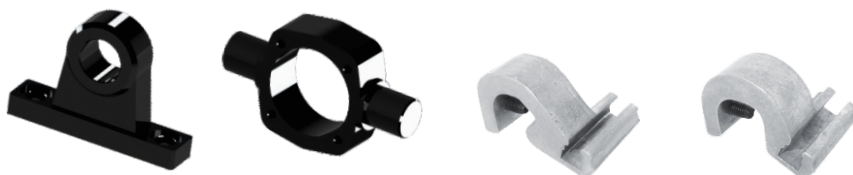
Acessórios



*Venda unitária

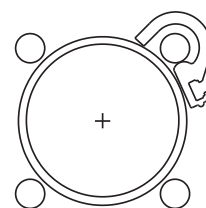
	Traseira Macho	Traseira Fêmea	Flange	Tipo Pés	Garfo para Haste	Pino para Garfo
32	CB32	DB32	FB32	LB32	GY32	IB32
40	CB40	DB40	FB40	LB40	GY40	IB40
50	CB50	DB50	FB50	LB50	GY50/63	IB50/63
63	CB63	DB63	FB63	LB63		
80	CB80	DB80	FB80	LB80	GY80/100	IB80/100
100	CB100	DB100	FB100	LB100		
125	CB125	DB125	FB125	LB125	GY125	IB125
160	CB160	DB160	FB160	LB160	GY160/200	IB160/200
200	CB200	DB200	FB200	LB200		

• Suporte para Sensor

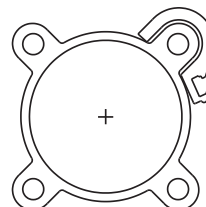


• Aplicação:

	Suporte para Munhão	Munhão Central	Suporte Tirantado	Suporte Perfilado
32	MTB32	TB32	DTM-01	DT-01
40	MTB40	TB40		
50	MTB50	TB50	DTM-02	DT-02
63	MTB63	TB63		DT-03
80	MTB80	TB80		DT-04
100	MTB100	TB100	DTM-03	DT-05
125	MTB125	TB125		
160	MTB160	TB160	DTM-04	
200	MTB200	TB200		



Série DTM

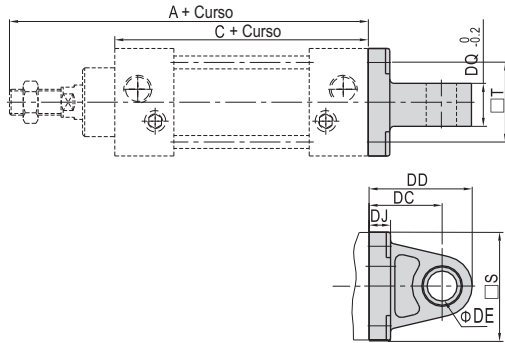


Série DT

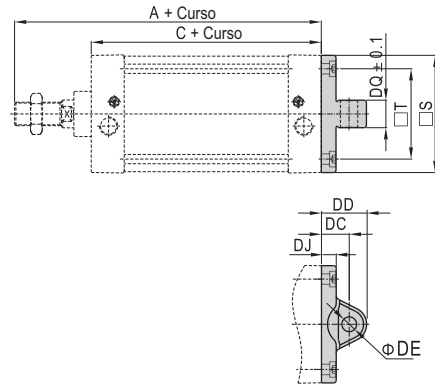
Dimensional

• Traseira Macho (CB)

Φ32~Φ100



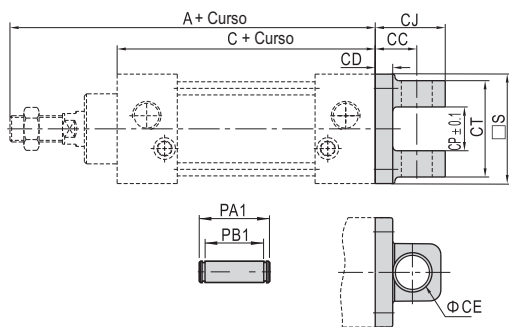
Φ125~Φ250



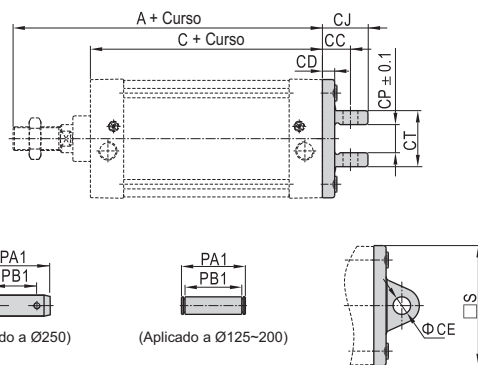
Ø (mm)	A	C	DC	DD	DE	DJ	DQ	S	T
32	140	93	34	44.5	12	9	16	45	33
40	142	93	34	45.5	14	9	20	49	37
50	150	93	34	46	14	10	20	61	47
63	153	96	34	46.5	14	10	20	74	56
80	182	107	48	64.5	20	14	32	93	70
100	188	113	48	65	20	14	32	111	84
125	203	115	32	52	20	17	31.7	135	104
160	239	126	40	68	28	19.5	39.7	173	134
200	244	126	60	90	28	23	39.7	213	163
250	294	153	70	106	36	24	49.7	255	202

• Traseira Fêmea (DB)

Φ32~Φ100



Φ125~Φ250

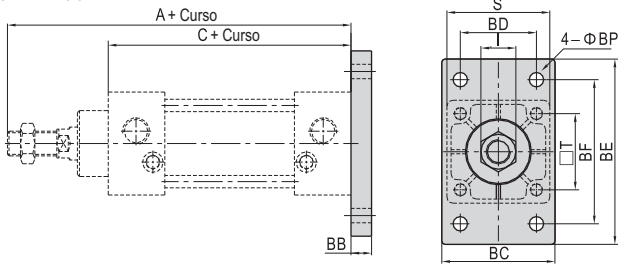


Ø (mm)	A	C	S	CC	CD	CE	CJ	CP	CT	PA1	PB1
32	140	93	45	19	9	12	29.5	16.3	32	39	32.8
40	142	93	49	19	9	14	30.5	20.3	44	51	44.8
50	150	93	61	19	10	14	31	20.3	52	59	52.8
63	153	96	74	19	10	14	31.5	20.3	52	59	52.8
80	182	107	93	32	14	20	48.5	32.3	64	73	64.8
100	188	113	111	32	14	20	49	32.3	64	73	64.8
125	203	115	135	32	14	20	52	32.1	64	73	64.8
160	239	126	173	40	15	28	68	40.1	80	90.2	80.8
200	244	126	213	60	23	28	90	40.1	80	90.2	80.8
250	294	153	255	70	24	36	106	50.1	100	130	108

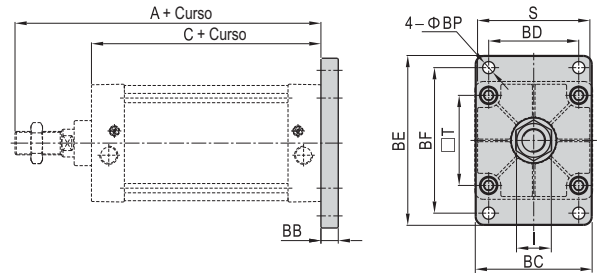
Dimensional

• Flange (FB)

Φ 32~Φ 100



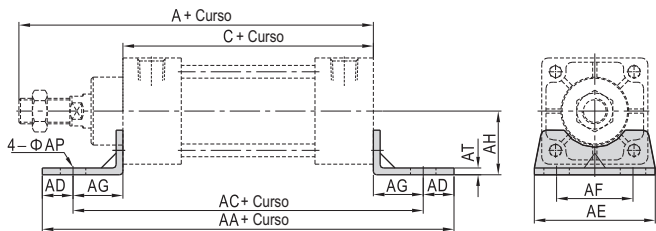
Φ 125~Φ 250



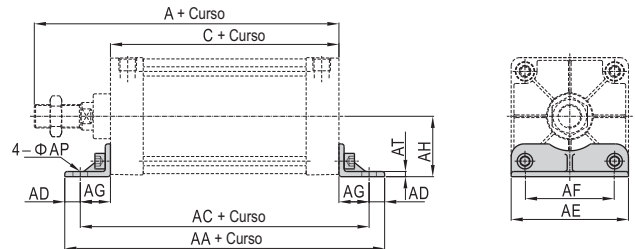
Ø (mm)	A	C	BB	BC	BD	BE	BF	BP	I	S	T
32	140	93	10	47	33	80	58	7	17	45	33
40	142	93	10	53	36	90	70	7	17	50	37
50	150	93	10	65	47	104	86	9	23	62	47
63	153	96	12	75	56	118	98	9	23	75	56
80	182	107	16	95	70	140	119	11	26	94	70
100	188	113	16	115	84	160	138	11	26	112	84
125	203	115	20	135	104	196	168	14	41	136	104
160	239	126	20	173	134	248	212	18	55	174	134
200	244	126	25	213	163	286	250	18	55	214	163
250	294	153	25	255	201	356	312	22	65	267	202

• Tipo Pés (LB)

Φ 32~Φ 100



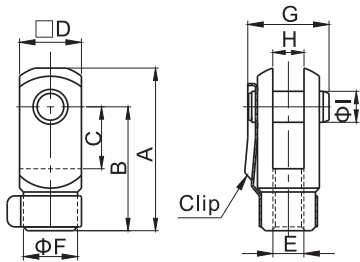
Φ 125~Φ 250



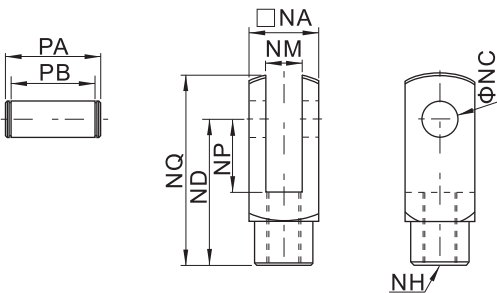
Ø (mm)	A	C	AA	AC	AD	AE	AF	AG	AH	AP	AT
32	140	93	153	134	9.5	50	33	20.5	28	9	3
40	142	93	169	140	14.5	57	36	23.5	30	12	3
50	150	93	173	149	12	68	47	28	36.5	12	3
63	153	96	184	158	13	80	56	31	41	12	3
80	182	107	199	167	16	97	70	30	49	14	4
100	188	113	209	173	18	112	84	30	57	14	4
125	203	115	221	185	18	136	104	35	70	17	6
160	239	126	246	206	20	174	134	40	91	17	8
200	244	126	276	226	25	214	163	50	113.5	22	9
250	294	153	323	273	25	267	201	60	141	26	15

Dimensional

• Garfo para Haste (GY)

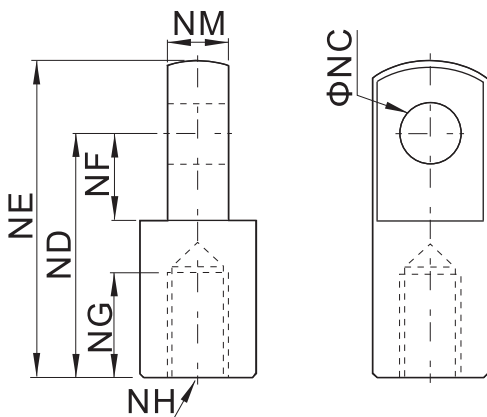


Ø (mm)	A	B	C	D	F	E	G	H	I
32	52	40	20	19	18	M10x1.25	25	10	10



Ø (mm)	NA	NC	ND	NP	NQ	NM	NH	PA	PB
40	25.4	12	48	24	62	12	M12x1.25	32.4	26.2
50 / 63	32	16	64	32	80	16	M16x1.5	39	32.8
80 / 100	44.4	20	80	40	101	20	M20x1.5	53.4	45.2
125	54	30	110	55	139	30	M27x2.0	64.2	54.8
160 / 200	70	35	144	73	179	35	M36x2.0	80.2	70.8

• Pino para Garfo (IB)

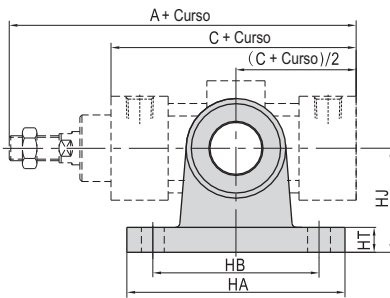


Ø (mm)	NC	ND	NE	NF	NG	NH	NM
32	10	40	50	15	20	M10x1.25	10
40	12	48	62	24	20	M12x1.25	12
50 / 63	16	64	82	32	23	M16x1.5	16
80 / 100	20	80	102	40	30	M20x1.5	20
125	30	110	139	51	45	M27x2.0	30
160 / 200	35	144	181	65	55	M36x2.0	35

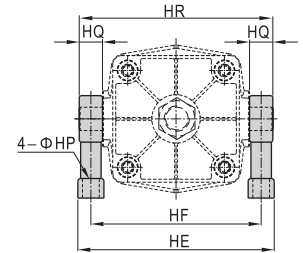
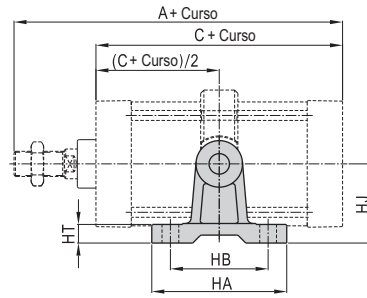
Dimensional

• Suporte para Munhão (MTB)

Φ 32~Φ 100



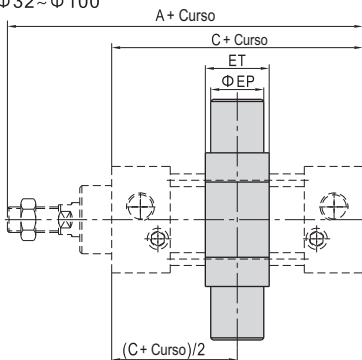
Φ 125~Φ 250



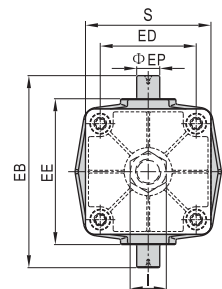
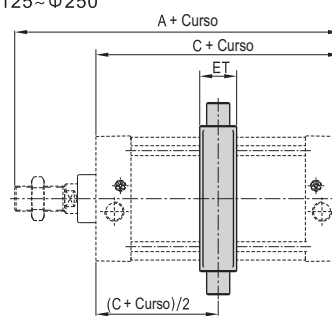
Ø (mm)	A	C	HA	HB	HE	HF	HP	HQ	HR	HT	HJ
32	140	93	100	75	90	71	12	16	87	11	54
40	142	93	103	80	109	86	11	23	113	12	50
50	150	93	103	80	122	99	11	23	126	12	50
63	153	96	103	80	134	111	11	23	138	12	50
80	182	107	110	85	160	137	13	23	164	12	70
100	188	113	110	85	178	155	13	23	182	12	70
125	203	115	145	105	211	183	18	25	208	20	85
160	239	126	185	140	272	236	22	36	272	25	130
200	244	126	185	140	318	282	22	36	318	25	130
250	294	153	215	165	394	349	26	45	394	28	160

• Munhão Central (TB)

Φ 32~Φ 100



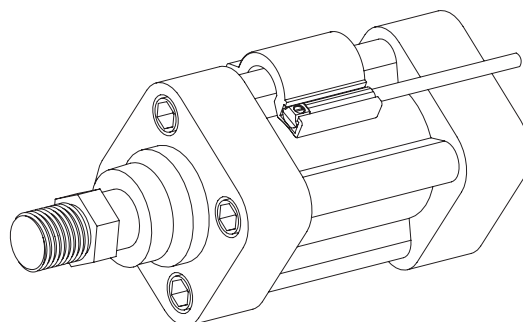
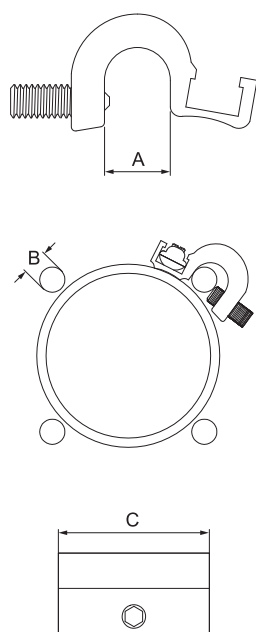
Φ 125~Φ 250



Ø (mm)	A	C	EB	ED	EE	EP	ET	I	S
32	140	93	87	33	55	16	22	17	45
40	142	93	113	37	63	25	28	17	50
50	150	93	126	47	76	25	28	23	62
63	153	96	138	56	88	25	30	23	75
80	182	107	164	70	114	25	32	26	94
100	188	113	182	84	132	25	38	26	112
125	203	115	208	104	158	25	40	41	136
160	239	126	272	134	200	36	46	55	174
200	244	126	318	163	246	36	46	55	214
250	294	153	394	202	304	45	56	65	267

Dimensional

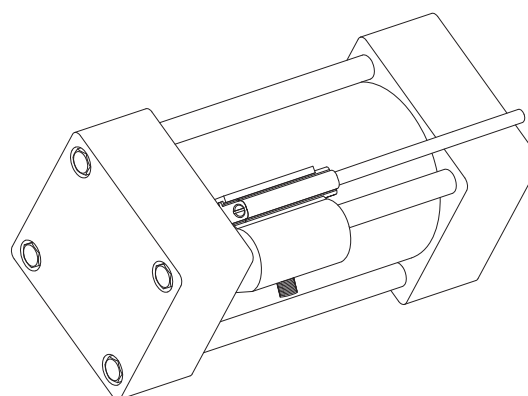
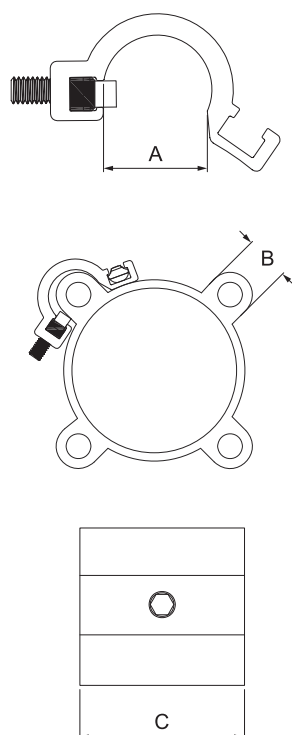
• Suporte Tirantado (DTM)



Modelo	A	B	C	Ø Aplicável
DTM-01	7.9	Ø6	25	Ø32, 40
DTM-02	10.4	Ø8 ~ Ø10	25	Ø50, 63 Ø80, 100
DTM-03	15.1	Ø12	25	Ø125
DTM-04	20.6	Ø16	25	Ø160, 200

Und.: mm

• Suporte Perfilado (DT)



Modelo	A	B	C	Ø Aplicável
DT-01	12.1	10.4	25	Ø32, 40
DT-02	15.9	13.5	25	Ø50, 63
DT-03	16.3	15	25	Ø80
DT-04	17.9	16	25	Ø100
DT-05	19.7	18.7	25	Ø125

Und.: mm



Precauções

- A GHPC do Brasil não se responsabiliza pelo uso indevido, mau uso, do equipamento.
- A utilização de máquinas e equipamentos pneumáticos deve ser feita apenas por profissionais qualificados.
- Não exceder as especificações descritas no catálogo, afim de evitar danos à integridade física do produto e/ou operador.
- Garantir o total cuidado no manuseio e instalação do produto afim de evitar choques e/ou quedas à peça.
Caso venha acontecer, mesmo que aparentemente intacto, poderá ter causado danos à sua função.
- Garantir total limpeza dos tubos e conexões antes de serem conectados ao produto.
- Lubrificação NÃO NECESSÁRIA, independente do meio em que a peça esteja sendo utilizada. (Ex.: Poeira, foligens, etc.)